

Z-Wave Coupler for GIRA

Model ZHC5002



ZHC5002 is a Z-Wave coupler module for GIRA pushbuttons. The module is designed for interfacing a GIRA push button sensor module (GIRA push button sensor 2, type 2003) with two 10-pole connectors to a Z-Wave network.

The ZHC5002 module contains a built-in relay that will allow you to control a local load and turning the module into a wall switch.

ZHC5002 can act as a Scene Controller by transmitting different Scene Notifications, when

buttons are pressed, long-pressed and double-pressed.

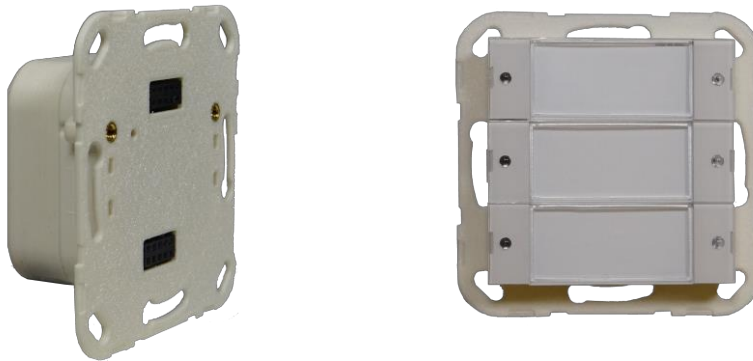
The device can work in different modes and with different functionality, which can be selected by means of various configuration parameters.

The ZHC5002 insert is constructed to fit into standard EURO wall boxes (60 mm).

ZHC5002 has push-in clamp connectors for easy installation.

Functions

- Built-in relay for control of a local load, i.e. a lamp socket via the existing interconnect wire and thereby replacing a standard 1-pole switch.
- Uses standard GIRA pushbutton modules with different designs and colours (type 2003 xxx).
- Based on Z-Wave Plus, 500-series platform for increased Z-Wave network coverage.
- The module contains an isolated power supply, so there is no risk for electrical shocks when mounting or replacing the GIRA module.
- All six LEDs are individually controlled and their functionality is configurable by means of Z-Wave configuration parameters.
- The firmware contains *Multi-Channel Command Class* for a better visualisation- and more logical control in the Z-Wave Home Controller.
- ZHC5002 will act as a Z-Wave network repeater to increase reliability of the network.
- The firmware in ZHC5002 is able to be updated by the end-user through the Z-Wave network (OTA firmware update).
- Low standby consumption (<0.3 W).
- The firmware contains *Central Scene Command Class* for easy scene launching in the Z-Wave Home Controller.



Specifications

Dimensions

H 70 mm x W 70 mm x D 27 mm

Radio protocol

Z-Wave: 868.4MHz – 500 Series.

Connection

230V AC, 50Hz, Fuse 5A Slow (soldered)
Push-in clamps: 0,2 – 2,5 mm² / 24 – 12 AWG.
5 poles, 2 x looped line, 2 x looped neutral, 1 relay
switched line output.

Radio range

40 m indoor / 80 m outdoor.

Relay output

Max 1000 W resistive load, or up to 150 W
inductive load.

Power consumption

0,6W / 0,3W standby.

DÉ DOMOTICA SHOP

Order information

ZHC5002: Module for GIRA 2003 pushbutton 2 series.

Rights to changes reserved.

For more information, see: www.z-homecontrol.dk

Logic Soft / Z-Home Control

Kaerlunden 43

2660 Broendby Strand

DENMARK

