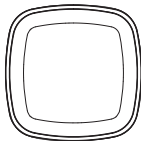


Smart Motion Sensor User Manual

M417-3Ever1.0



- Please read the user manual carefully before operation.
The guide picture is for reference only, please in kind prevail.

Product Introduction

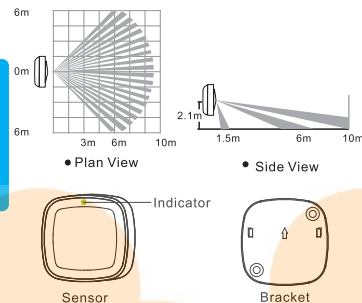
Smart motion sensor adopts super low power consumption Z-wave wireless network design and automatic threshold adjustment technology to enhance the stability of the sensor, efficiently anti-false alarm. Automatic temperature compensation technology, can efficiently prevent sensors from the decrease in sensitivity resulted from the temperature variation. Suitable to be used for safety protection of residential, villas, factories, shopping malls, warehouses, office buildings, banks, computer rooms and other places.



- 1.Power supply : 3V DC (CR2450 battery)
- 2.Static current : $\leq 15\mu A$
- 3.Alarm current : $\leq 36mA$
- 4.Detecting angle : 90°
- 5.Install height : 2.1m
- 6.Detecting distance : 8 ~ 10m
- 7.Working environment : $-10^\circ C \sim +50^\circ C$
- 8.Working humidity : Maximum 95%RH (No condensation)
- 9.Networking : Z-Wave Ad-Hoc Network
- 10.Wireless networking distance : $\geq 70m$ (in the open area)
- 11.Dimension : 65 * 65 * 28.5mm

Technical Parameters

Detecting Area



- Please avoid outdoor installation, places with pets, air-condition, heat source nearby, places with direct sunshine and places under rotating objects. The installation surface should be solid without vibration.
- Please install the sensor in the places where an intruder may pass easily.



Tips

Step 1



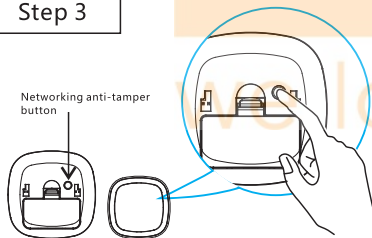
- Removing insulator make device on power. Device will in warm-up state when red LED flash, after 30 seconds LED off, warm-up complete.

Step 2



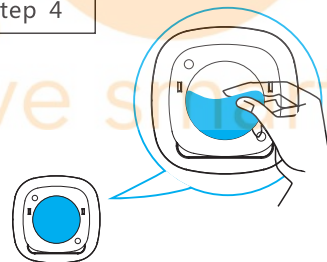
- Detector will enter the network mode by clicking "adding devices" in the APP.

Step 3



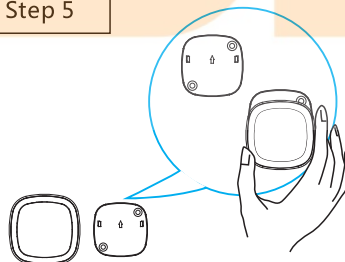
- Connecting network: According to APP prompt, press the networking button 3 times within 1.5 seconds, green flash(Maximum 30seconds waiting), APP Interface prompted, networking success.
- Disconnecting network: Click the delete equipment button on APP, press the networking button 3 times within 1.5 seconds, green light flash 6 times slowly, quit networking.

Step 4



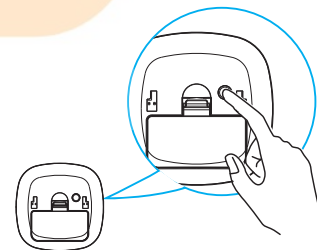
- Paste the device in the area required after removing double-side tap on the back side

Step 5



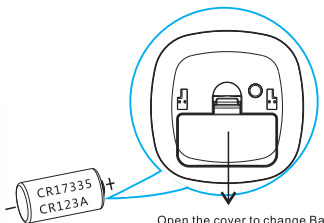
- Note: Pls keep arrow part in the picture upwards
Put the sensor into the bracket.

Restore settings



- Press the networking switches and power on (put in battery),ID code will be cleared, then the settings will be restore to the factory settings.

Changing battery



- Please change the battery according to negative and positive of the battery
- Please deal with waste batteries correctly for environmental protection.