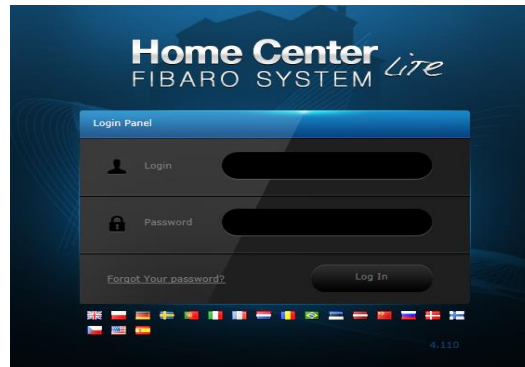
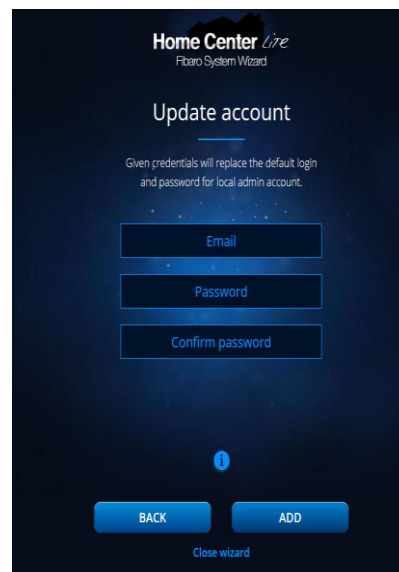
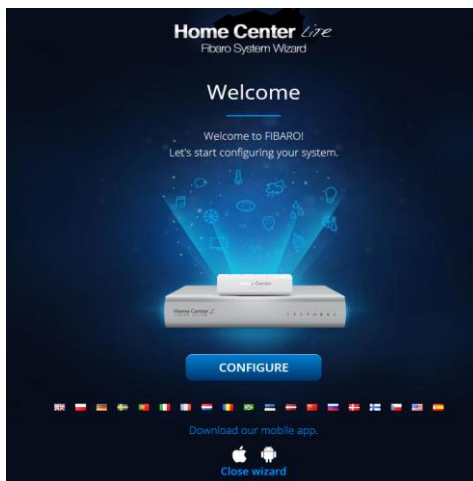


## Fibaro Home Center Live (vers. 4.150)

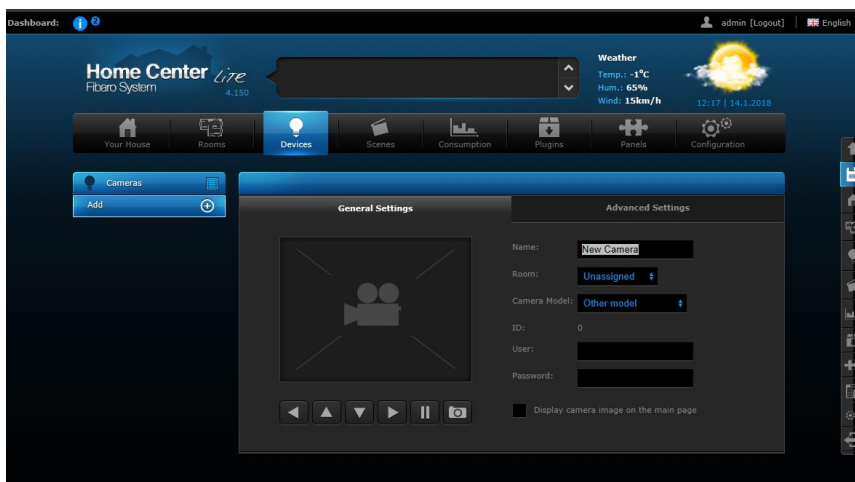
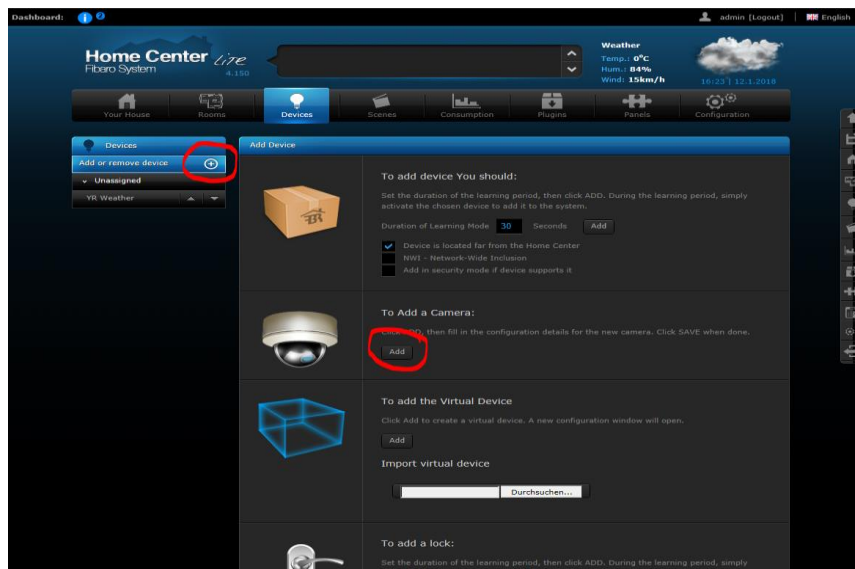
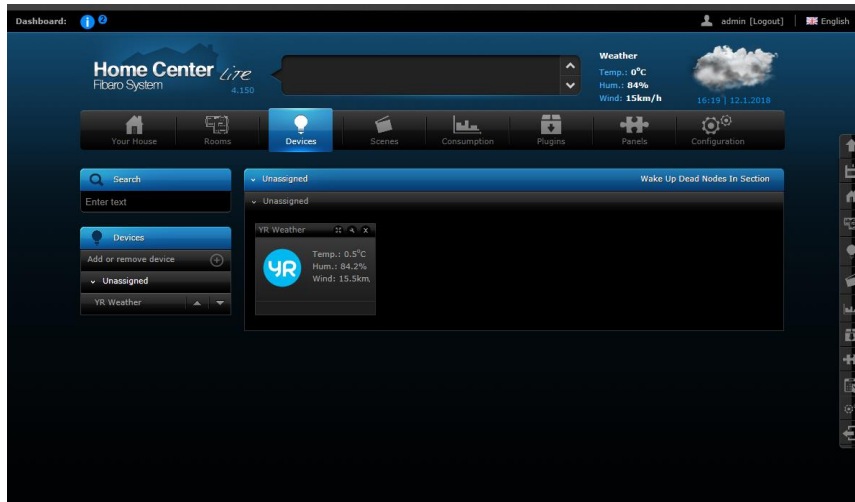
Connect to your Fibaro Home Center Live and log in with your login details. The default settings for the user name and password of the Fibaro Home Center Live are "admin".



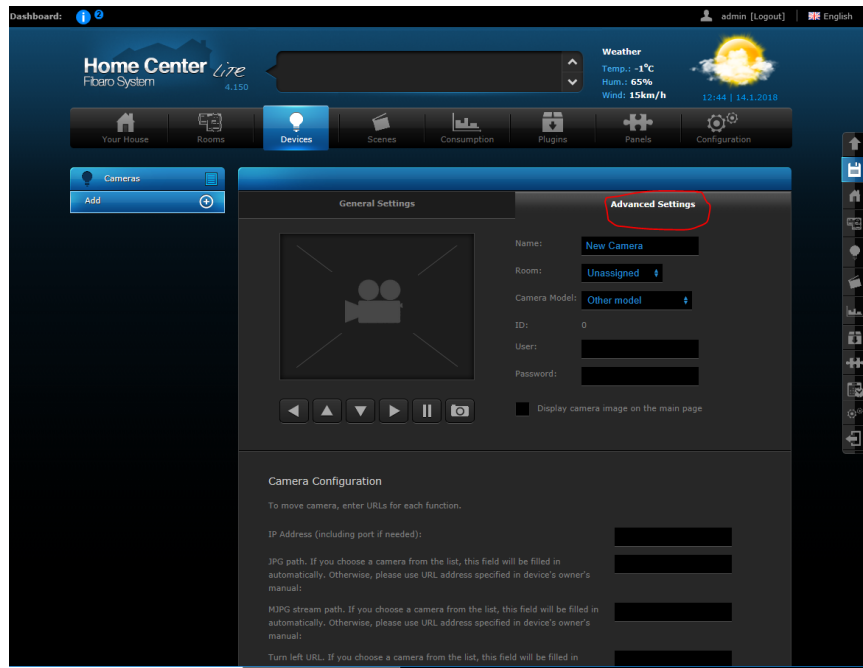
At the first login you must enter an e-mail address and change the default password for the login, this is done under "Configure".



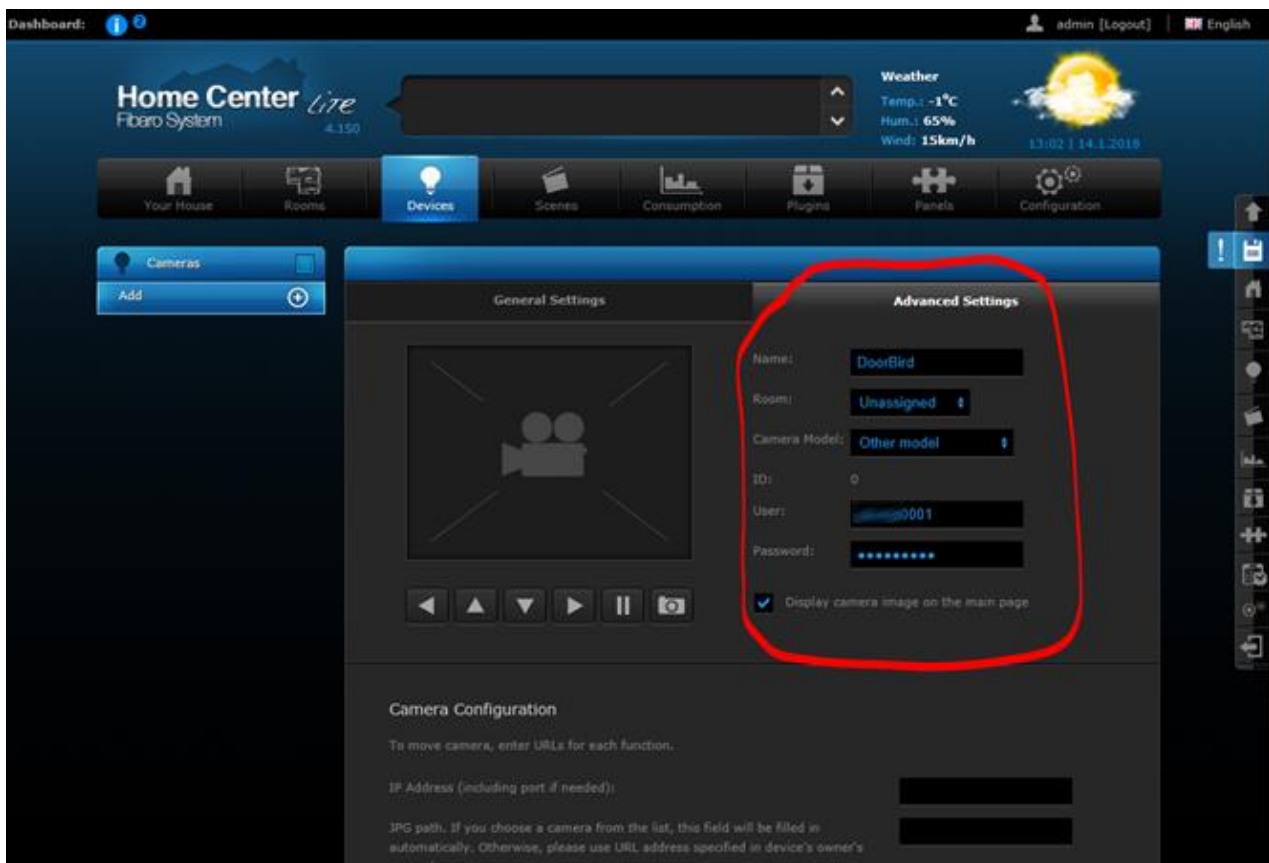
Then close the wizard. You will be directed to the setup area. There switch to the Devices section and create a new camera called "DoorBird".



Now switch to the "Advanced Settings" area.

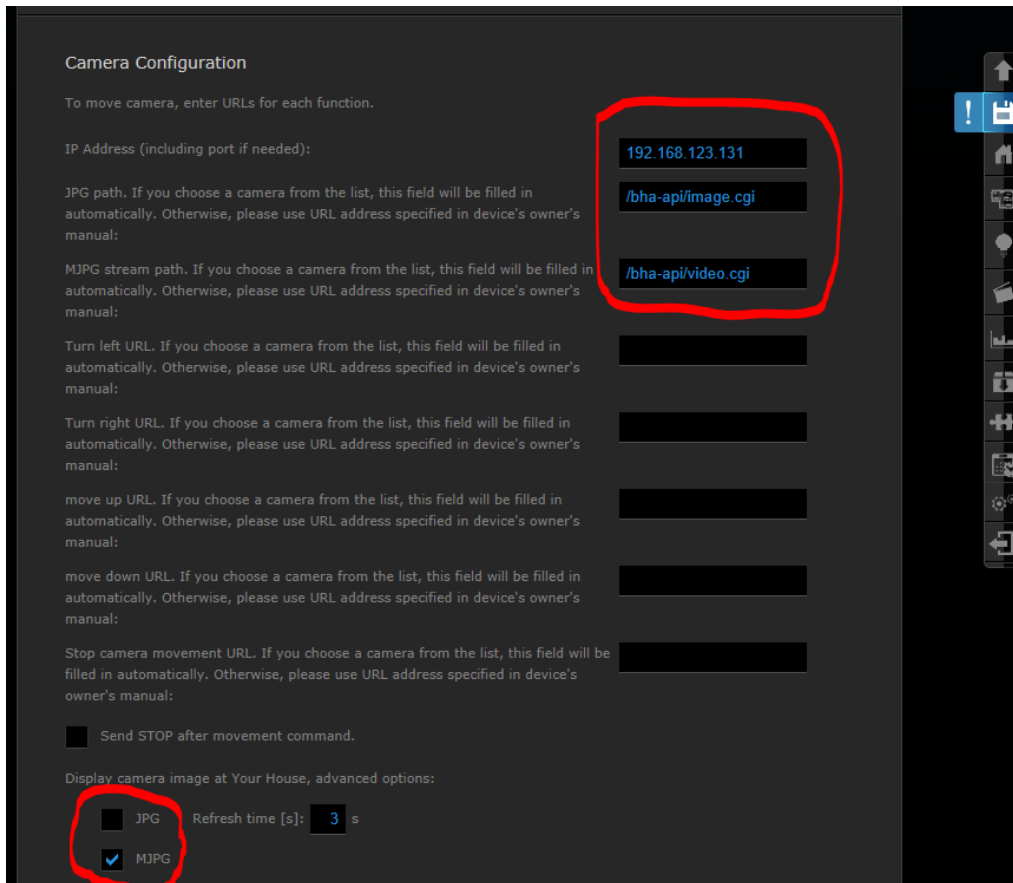


Enter the user name you use to add the DoorBird IP Video Door Station to the DoorBird App (e.g. xxxx0001) in the field "User" and the password in the field "Password" (in the delivery state you will also find the user name and password on your DoorBird DIGITAL PASSPORT document). Then switch to the "Advanced Settings" section.



The IP address and the paths to the “JPG path” and “MJPEG stream path” must now be entered in the lower area under "Camera Configuration". NOTE: You can gather the current LAN IP address of your DoorBird IP Video Door Station in your router or via <http://www.doorbird.com/checkonline> as long as the device is connected to the Internet.

Then save the entered values!



**Camera Configuration**

To move camera, enter URLs for each function.

IP Address (including port if needed):

JPG path. If you choose a camera from the list, this field will be filled in automatically. Otherwise, please use URL address specified in device's owner's manual:

MJPEG stream path. If you choose a camera from the list, this field will be filled in automatically. Otherwise, please use URL address specified in device's owner's manual:

Turn left URL. If you choose a camera from the list, this field will be filled in automatically. Otherwise, please use URL address specified in device's owner's manual:

Turn right URL. If you choose a camera from the list, this field will be filled in automatically. Otherwise, please use URL address specified in device's owner's manual:

move up URL. If you choose a camera from the list, this field will be filled in automatically. Otherwise, please use URL address specified in device's owner's manual:

move down URL. If you choose a camera from the list, this field will be filled in automatically. Otherwise, please use URL address specified in device's owner's manual:

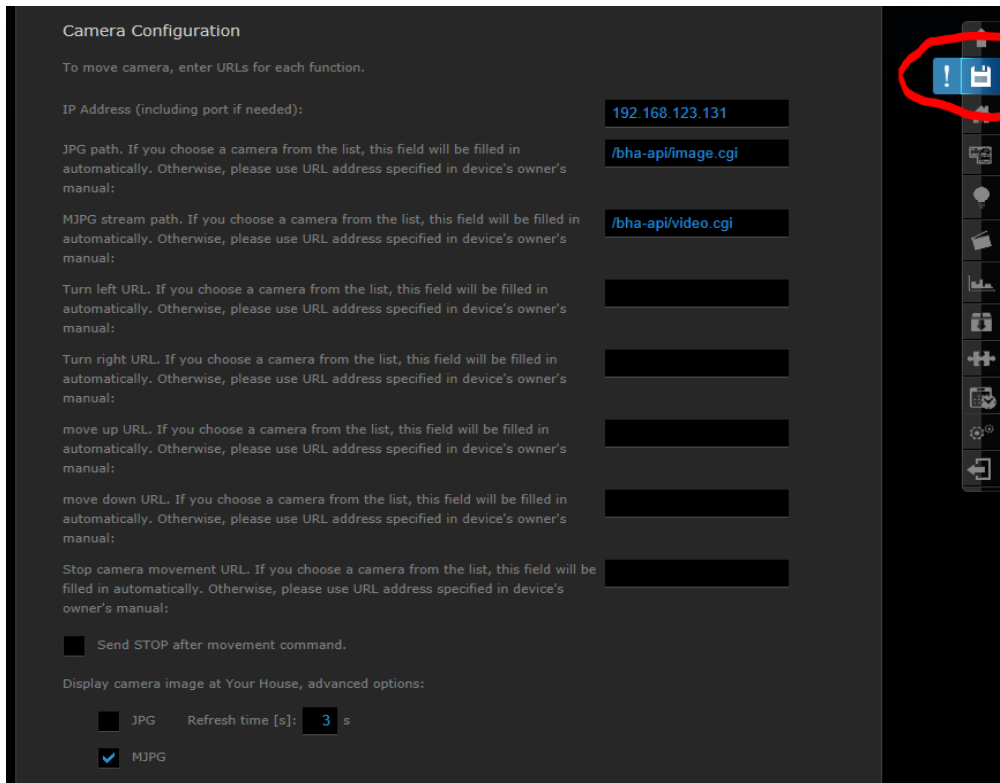
Stop camera movement URL. If you choose a camera from the list, this field will be filled in automatically. Otherwise, please use URL address specified in device's owner's manual:

Send STOP after movement command.

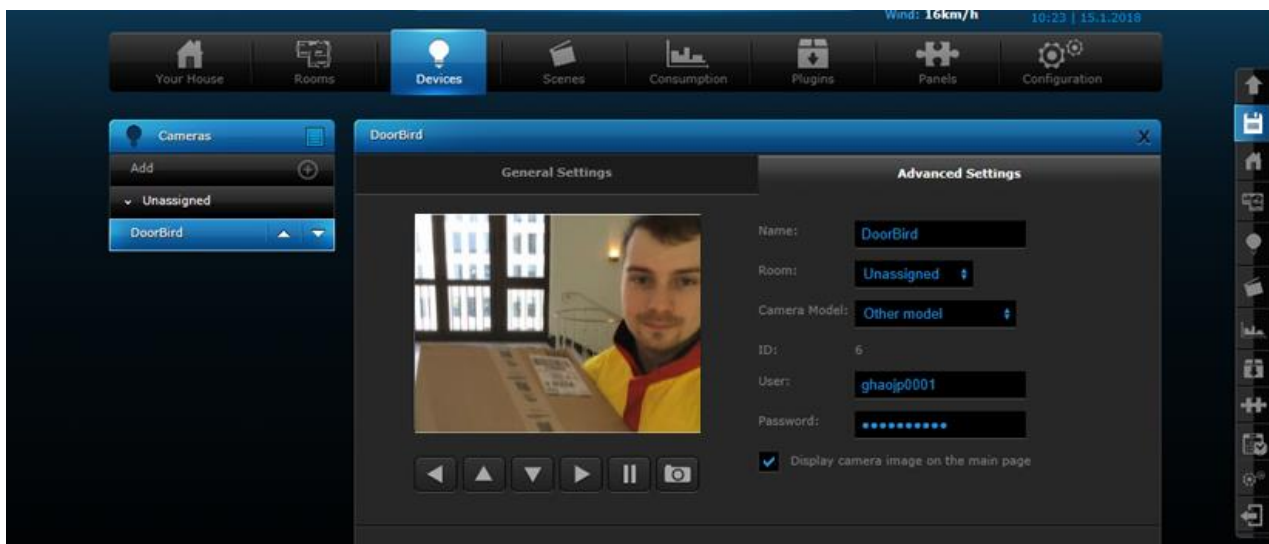
Display camera image at Your House, advanced options:

JPG Refresh time [s]:  s

MJPG

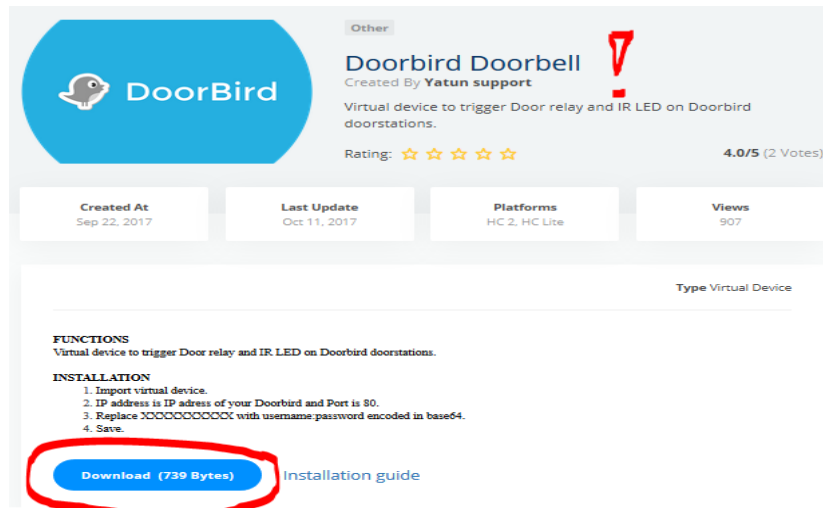


When you have entered the details correctly you will see a live image of your DoorBird IP Video Door Station after saving the details under "Device".

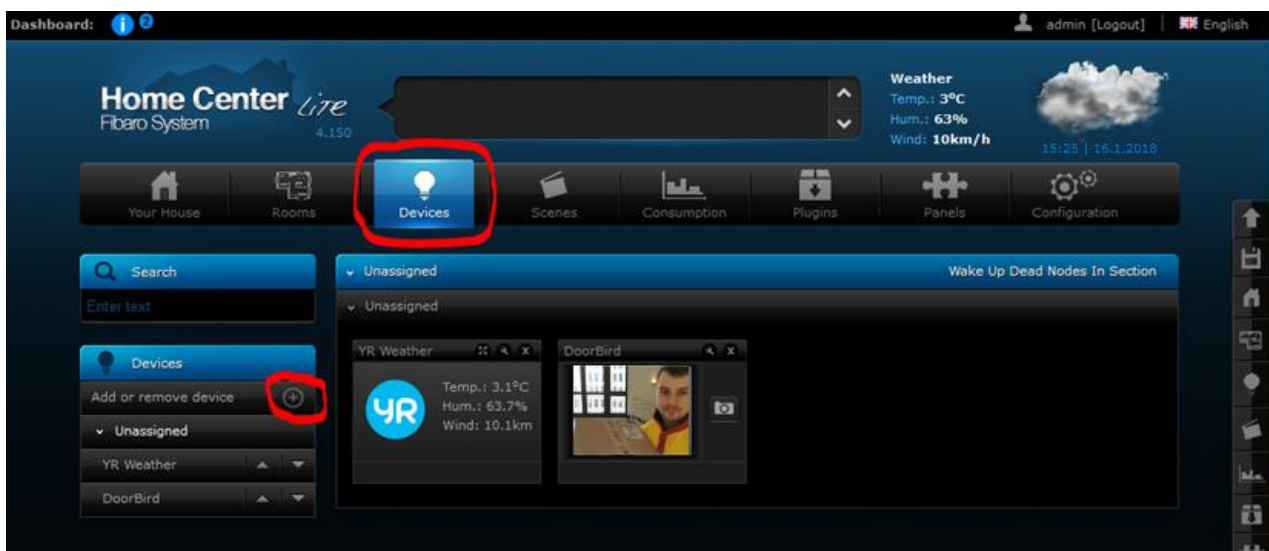


To activate the door opener and infrared lighting, you will need the additional Fibaro App "DoorBird Doorbell" from the Fibaro Marketplace.

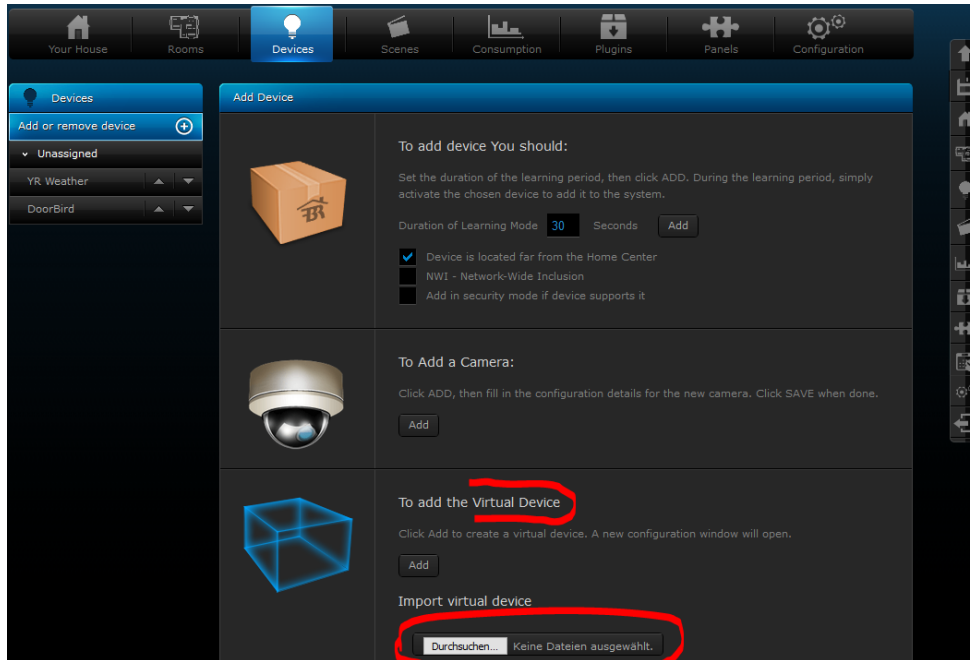
To download it go to <https://marketplace.fibaro.com/items/doorbird>



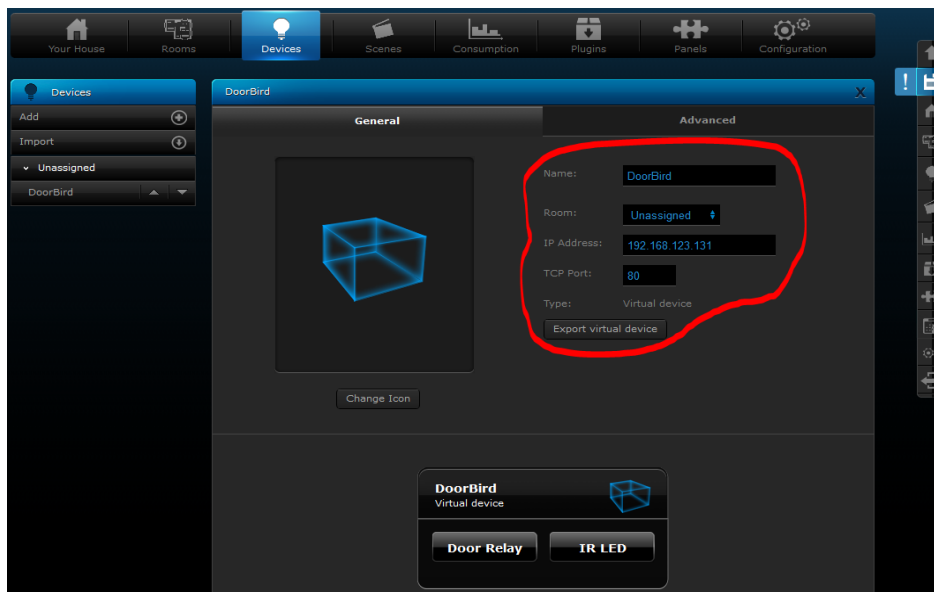
After downloading the Fibaro App "DoorBird Doorbell" from the Fibaro Marketplace, log in to your Fibaro Home Center Live again and go back to the Devices section and press the "Add" button once. The selection menu will then start again.



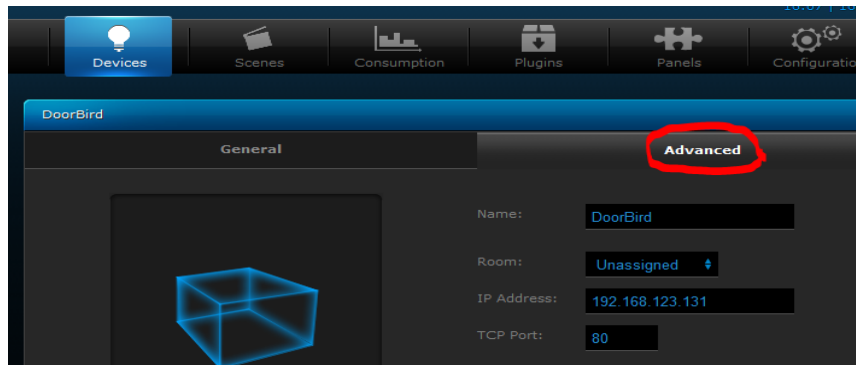
Here you must create a new virtual device - for this you have to include the previously downloaded Fibaro App "DoorBird Doorbell".



The configuration interface opens automatically after the integration of the Fibaro App "DoorBird Doorbell". Enter the IP address of your DoorBird IP Video Door Station and port "80".

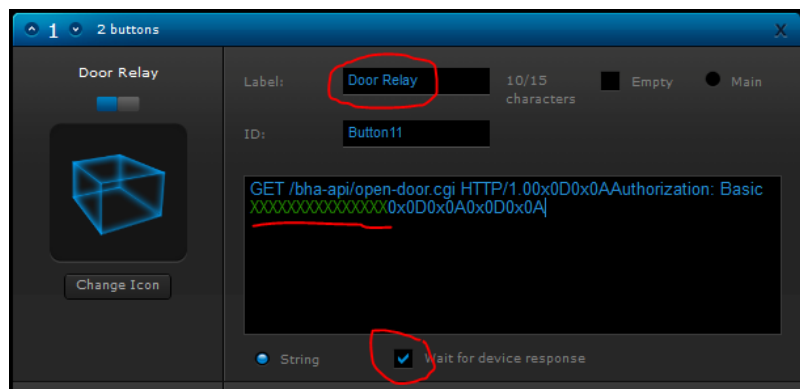


Then switch to the "Advanced" area and scroll down to the bottom once. You have to enter the authentication details for the "Door Relay" and the "IR LED".



You have to replace "XXXXXXXXXXXXXXXXXXXX" with the "username:password" in Base64 format, where "username" is the user name you use to add the DoorBird IP Video Door Station to the DoorBird App (e.g. xxxx0001) and "password" is the password use to add the DoorBird IP Video Door Station to the DoorBird App. To encode something into Base64 format you can e.g. use <https://www.base64encode.org/>

Example for a correct Base64 encoding:"testuser:testpass" becomes "dGVzdHVzZXI6dGVzdHBhBhc3M=".



You can use the door opener and the IR LED function after you have entered the authentication details for "Door Relay" and "IR LED" saved them.

Your DoorBird IP Video Door Station is now integrated into the Fibaro Home Center Live.