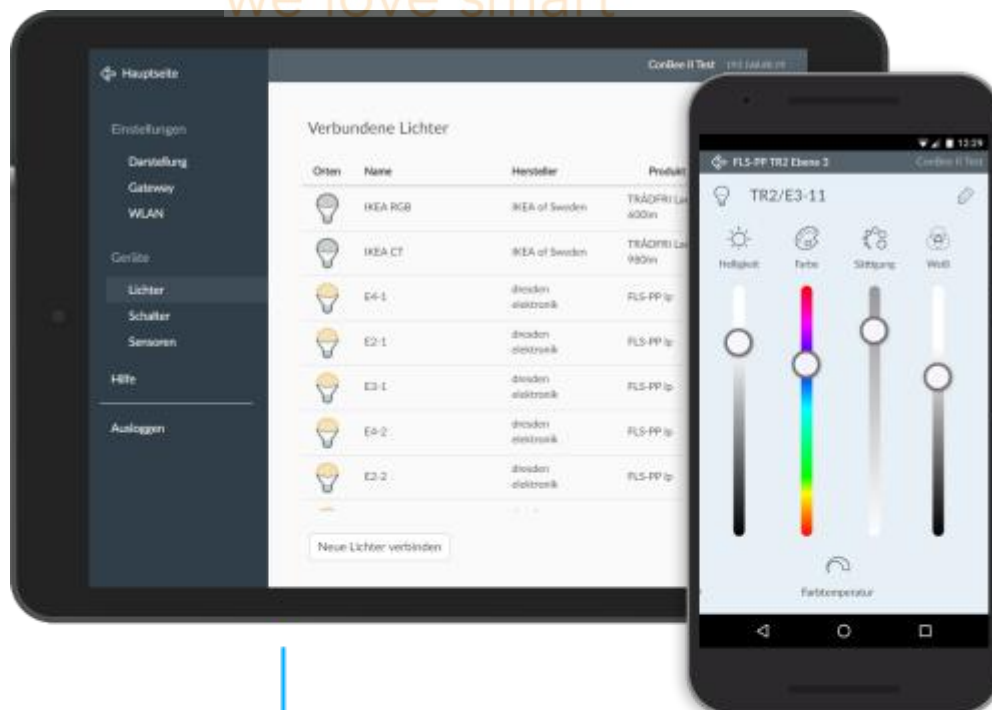
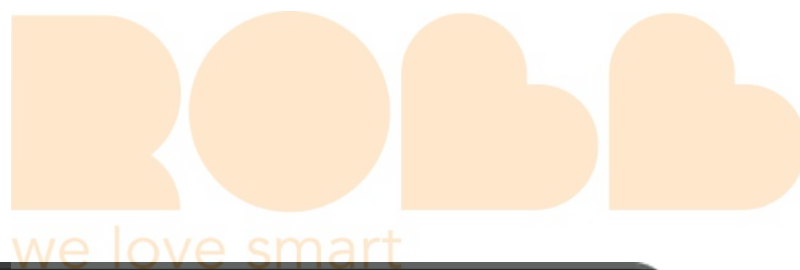


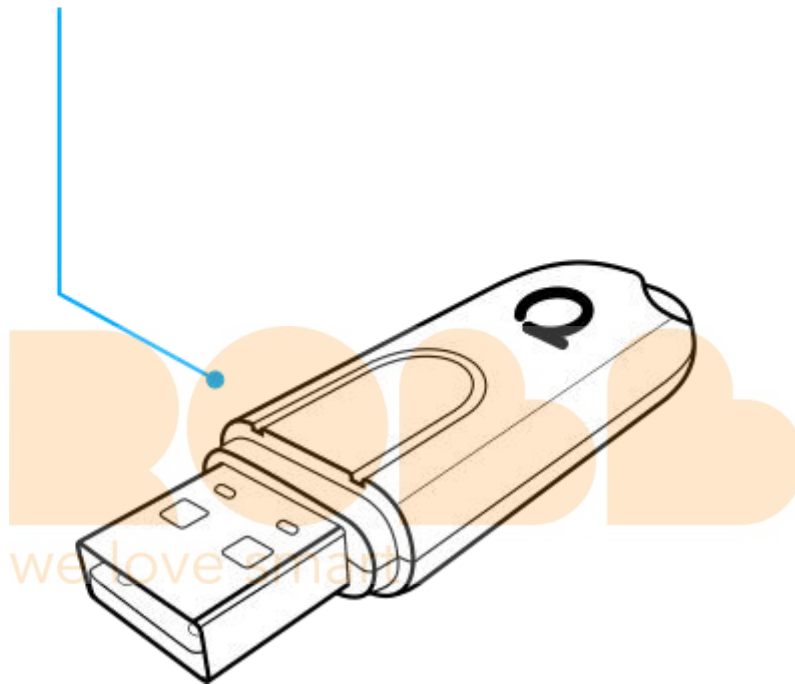
ConBee II

Installation

The deCONZ application is a tool to configure, control and monitor Zigbee networks with the ConBee II.

The following sections describe the installation steps of deCONZ for various platforms.





Supported platforms

Raspbian

Ubuntu

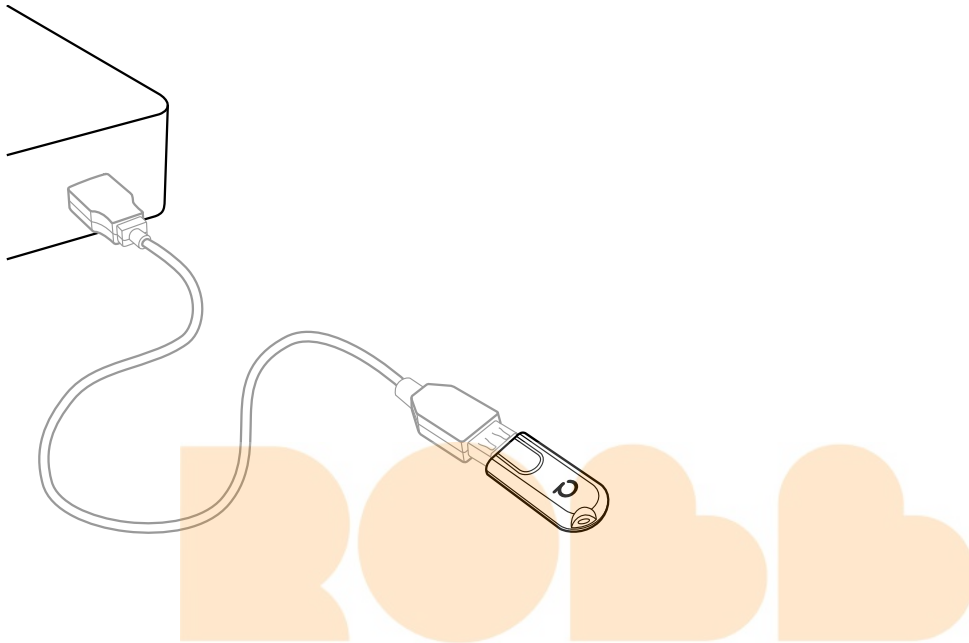
Docker

Windows 7

Windows 10

Connection

To ensure a strong radio signal, the ConBee II should preferably be connected to a USB 2.0 socket with an USB extension cable.



- Prevents interference with housing and peripherals
- Provides maximum signal range and reliability

Note

Connection problems may occur if the ConBee II is attached directly to the USB port or is located near USB 3.0 devices such as external hard drives or memory sticks.

Raspbian

Supported Raspberry Pi models and distributions

- Raspberry Pi 1, 2B, 3B, 3B+ und 4B
- ~~Raspbian Jessie~~
- ~~Raspbian Stretch~~
- Raspbian Buster
- Raspbian Bullseye

Note

The following steps describe the manual installation of deCONZ.
Alternatively a preinstalled [SD-card image](#) can be used.

Installation

1. Set user USB access rights

```
sudo gpasswd -a $USER dialout
```

Note: Changes to access rights only become active after logging out and in or after a restart.

2. Import Phoscon public key

```
wget -O - - http://phoscon.de/apt/deconz.pub.key | \  
sudo apt-key add -
```

3. Configure the APT repository for deCONZ

Stable

```
sudo sh -c "echo 'deb http://phoscon.de/apt/deconz \  
$(lsb_release -cs) main' > \  
/etc/apt/sources.list.d/deconz.list"
```

Beta (alternative)

```
sudo sh -c "echo 'deb http://phoscon.de/apt/deconz \
$(lsb_release -cs)-beta main' > \
/etc/apt/sources.list.d/deconz.list"
```

4. Update APT package list

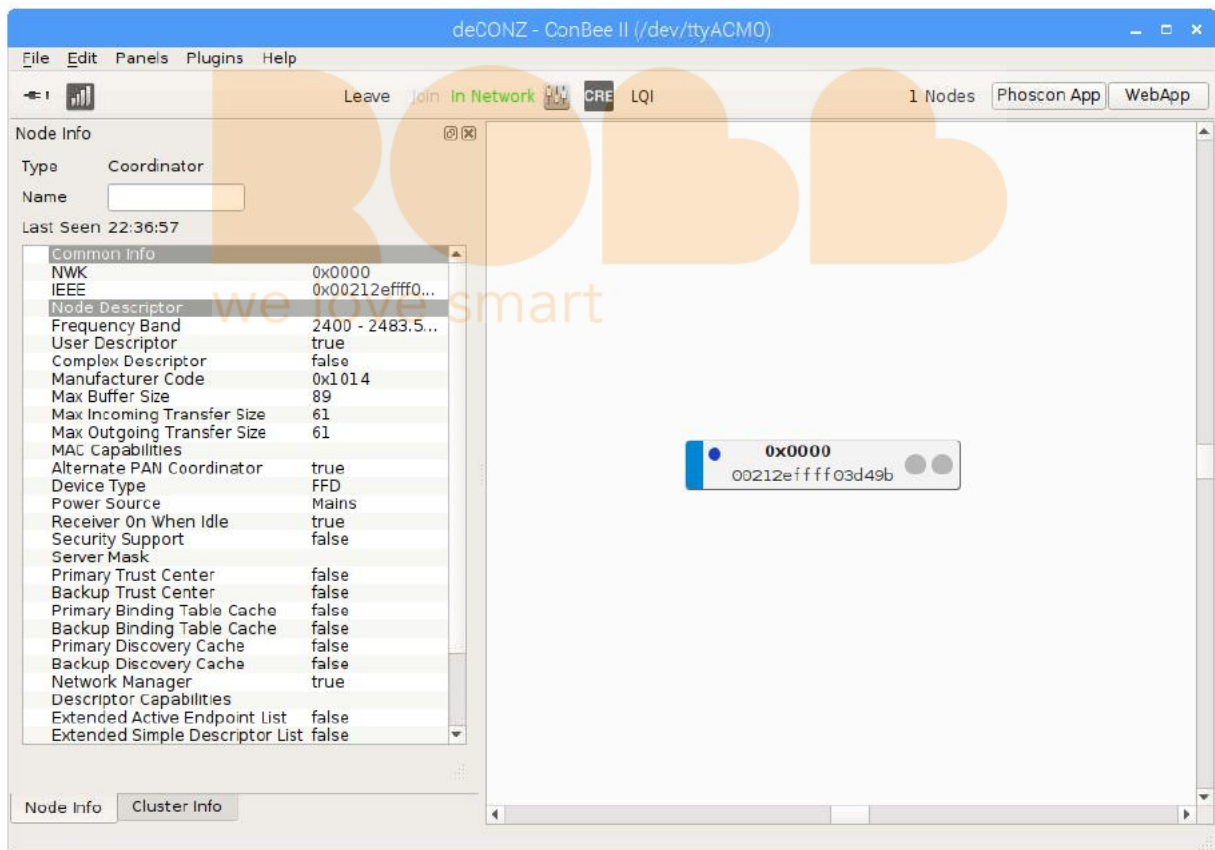
```
sudo apt update
```

5. Install deCONZ

```
sudo apt install deconz
```

After the installation deCONZ can be started via the application menu.

Menu > Programming > deCONZ



Now the first Zigbee devices can be paired via the Phoscon App. Further information can be found in the [Phoscon App documentation](#).

Troubleshooting

If problems occur during the installation, the [Support section](#) answers frequently asked questions (FAQ) and provides further assistance.

Ubuntu

Supported Ubuntu versions

- ~~Ubuntu 16.04 LTS 64-Bit PC (AMD64)~~
- Ubuntu 18.04 LTS 64-Bit PC (AMD64)
- Ubuntu 20.04 LTS 64-Bit PC (AMD64)

Installation

1. Set user USB access rights

```
sudo gpasswd -a $USER dialout
```

Note: Changes to access rights only become active after logging out and in or after a restart.

2. Import Phoscon public key

```
wget -O - - http://phoscon.de/apt/deconz.pub.key | \  
sudo apt-key add -
```

3. Configure the APT repository for deCONZ

Stable

```
sudo sh -c "echo 'deb [arch=amd64] http://phoscon.de/apt/deconz \  
$(lsb_release -cs) main' > \  
/etc/apt/sources.list.d/deconz.list"
```

Beta (alternative)

```
sudo sh -c "echo 'deb [arch=amd64] http://phoscon.de/apt/deconz \  
$(lsb_release -cs)-beta main' > \  
/etc/apt/sources.list.d/deconz.list"
```

```
/etc/apt/sources.list.d/deconz.list"
```

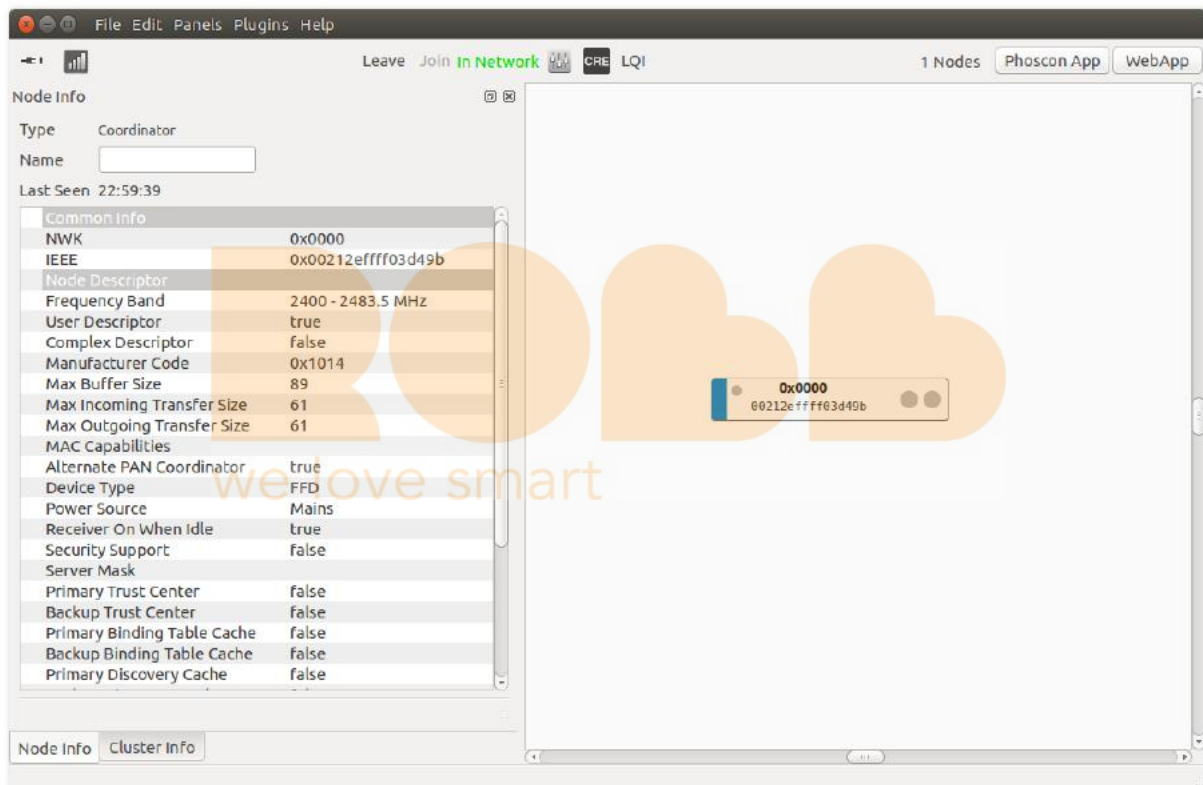
4. Update APT package list

```
sudo apt update
```

5. Install deCONZ

```
sudo apt install deconz
```

After the installation deCONZ can be started via the application menu.



Now the first Zigbee devices can be paired via the Phoscon App. Further information can be found in the [Phoscon App documentation](#).

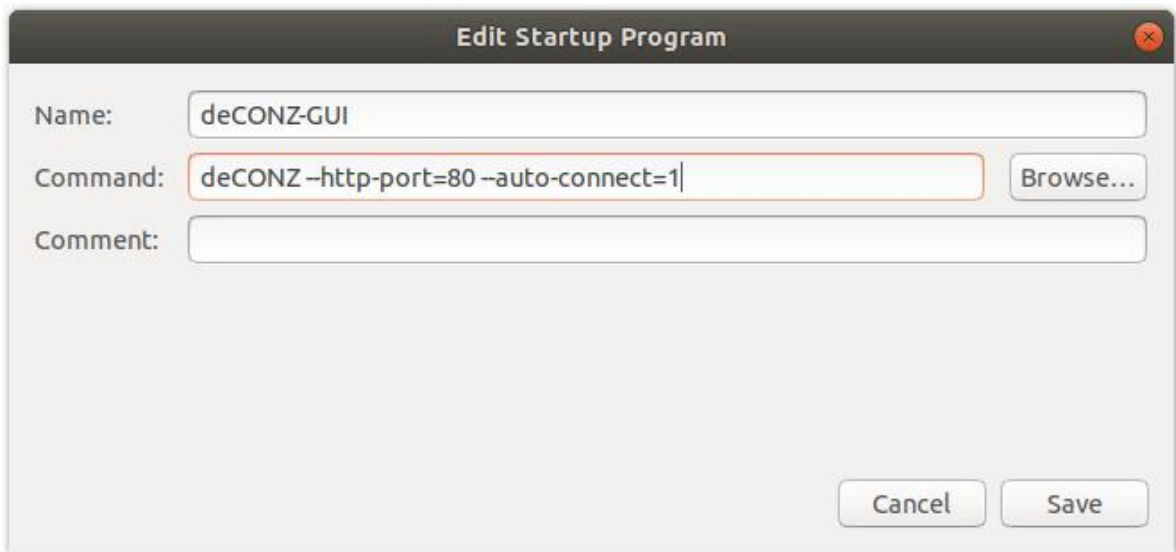
Auto start of the deCONZ GUI (optional)

1. Open the Startup Application Preferences via the application menu

```
gnome-session-properties
```

2. Add a new entry with the following commandline:

```
deCONZ --http-port=80 --auto-connect=1
```



Troubleshooting

If problems occur during the installation, the [Support section](#) answers frequently asked questions (FAQ) and provides further assistance.

Docker

Supported host systems

- Linux x86_64/amd64
- Linux armv7 (e.g. Raspberry Pi)
- Linux arm64

To run deCONZ in a Docker container, we recommend the Docker image **deconz-community/deconz-docker**, which is maintained by the community.

The installation steps are described on
<https://github.com/deconz-community/deconz-docker>.

Windows 10 installation

1. Download deCONZ software

<https://deconz.dresden-elektronik.de/win>

2. Install USB driver

The drivers are installed automatically after connecting the ConBee II. If necessary, the drivers are downloaded from the Internet.



Windows 7 installation

1. Download deCONZ software

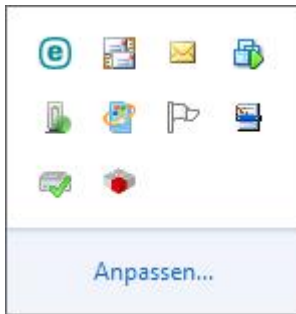
<https://deconz.dresden-elektronik.de/win>

2. Download and extract the driver ZIP file

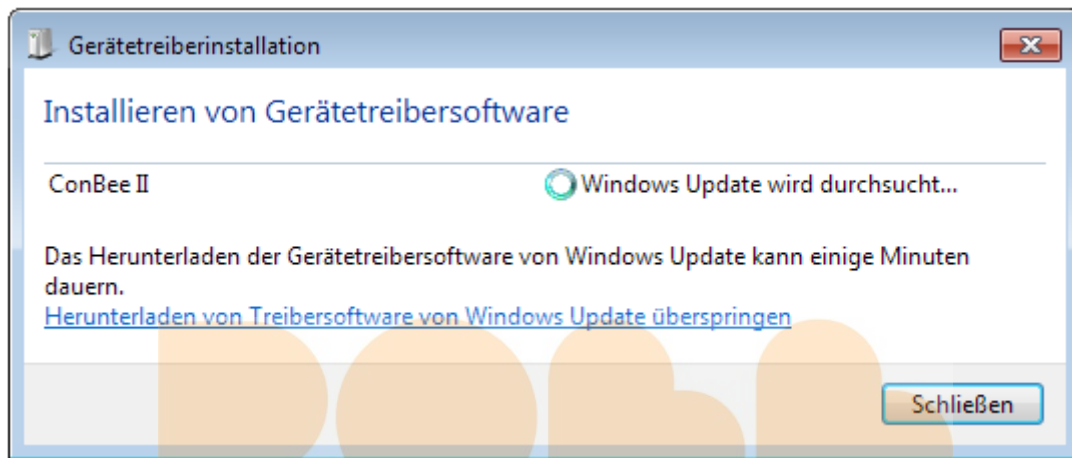
[ConBee_II_USB_Driver_V1_00.zip](#)

3. Manual driver installation

After plugging in the ConBee II, Windows automatically starts the search for a suitable driver.

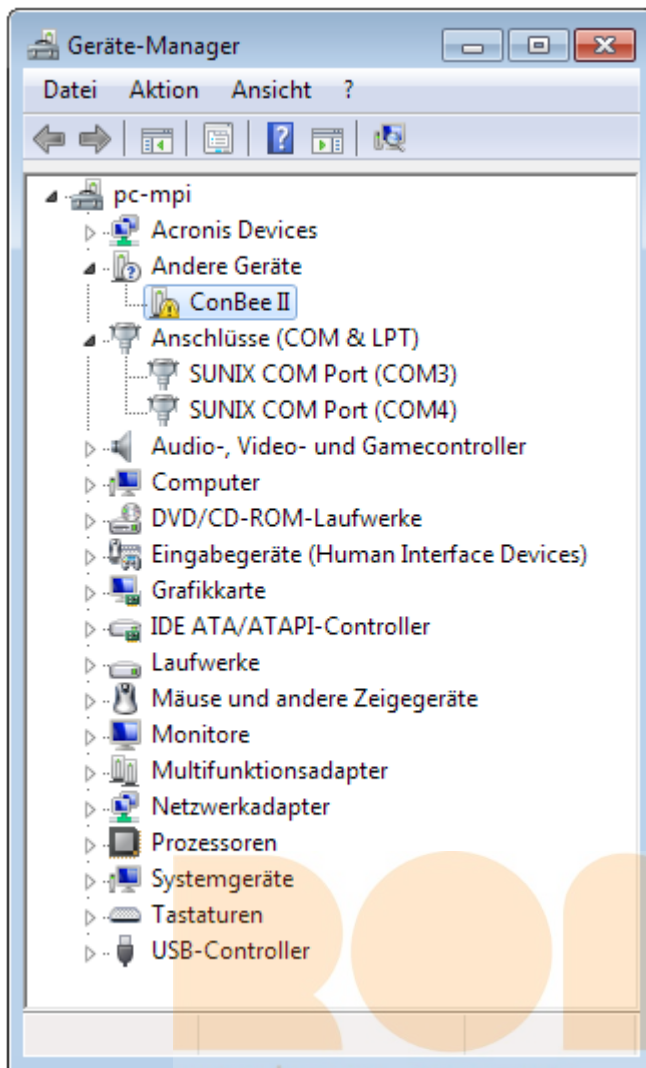


4. Select "Skip Windows Update driver software download".

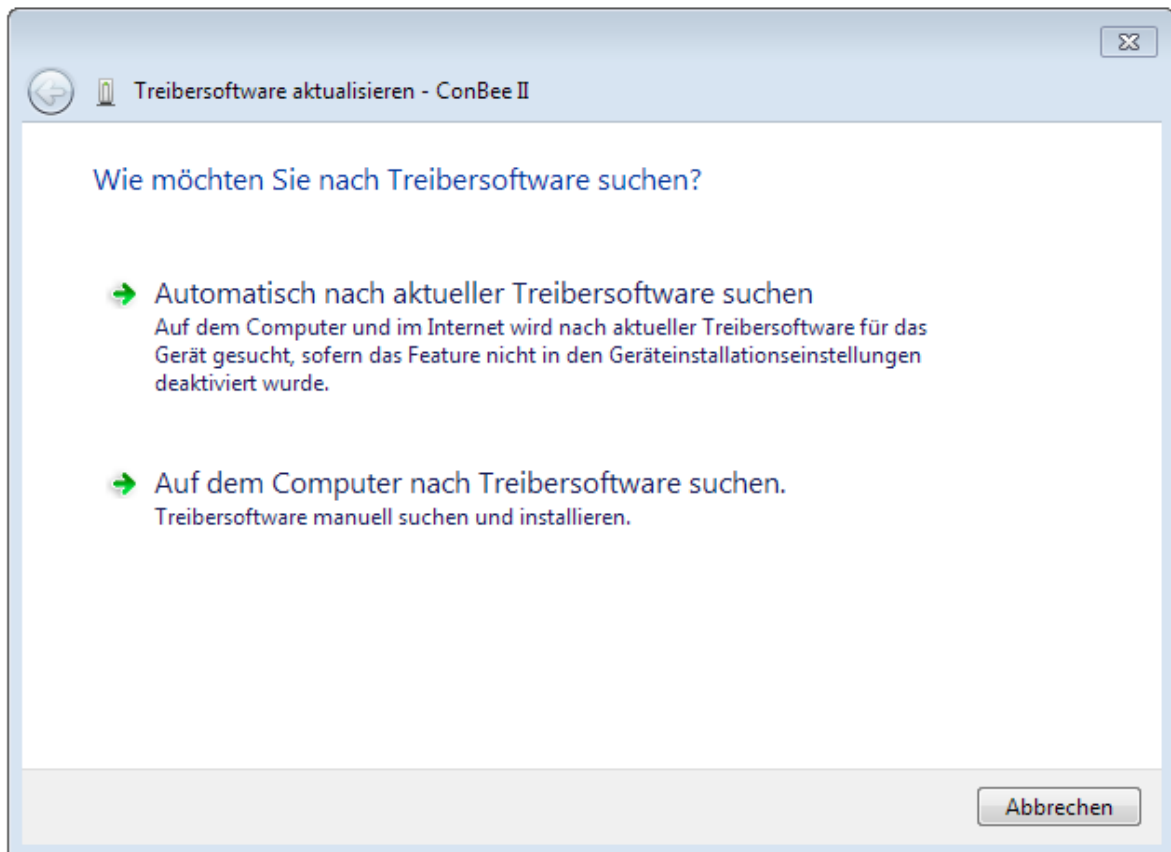


5. Open Device Manager

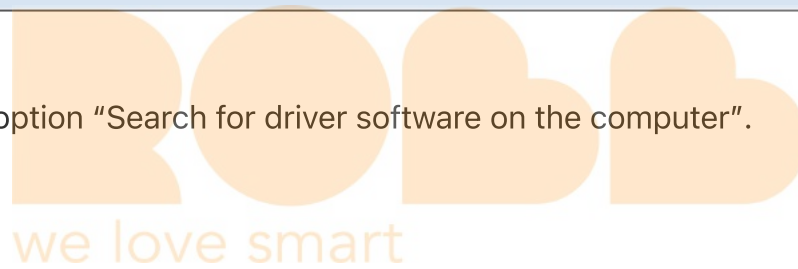
Enter the key combination <Win> + <Pause> and select "Device Manager" in the dialog that appears.

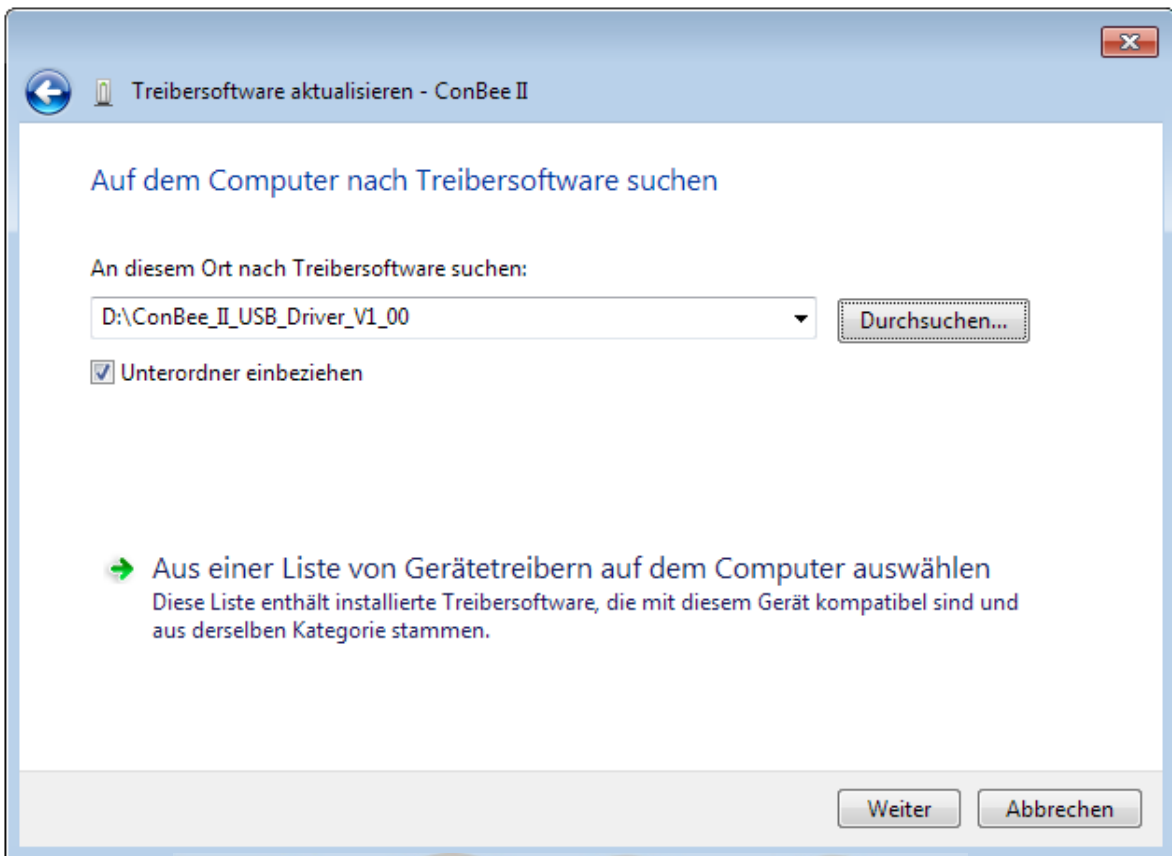


6. Right click on "ConBee II" and select "Update driver" in the context menu.



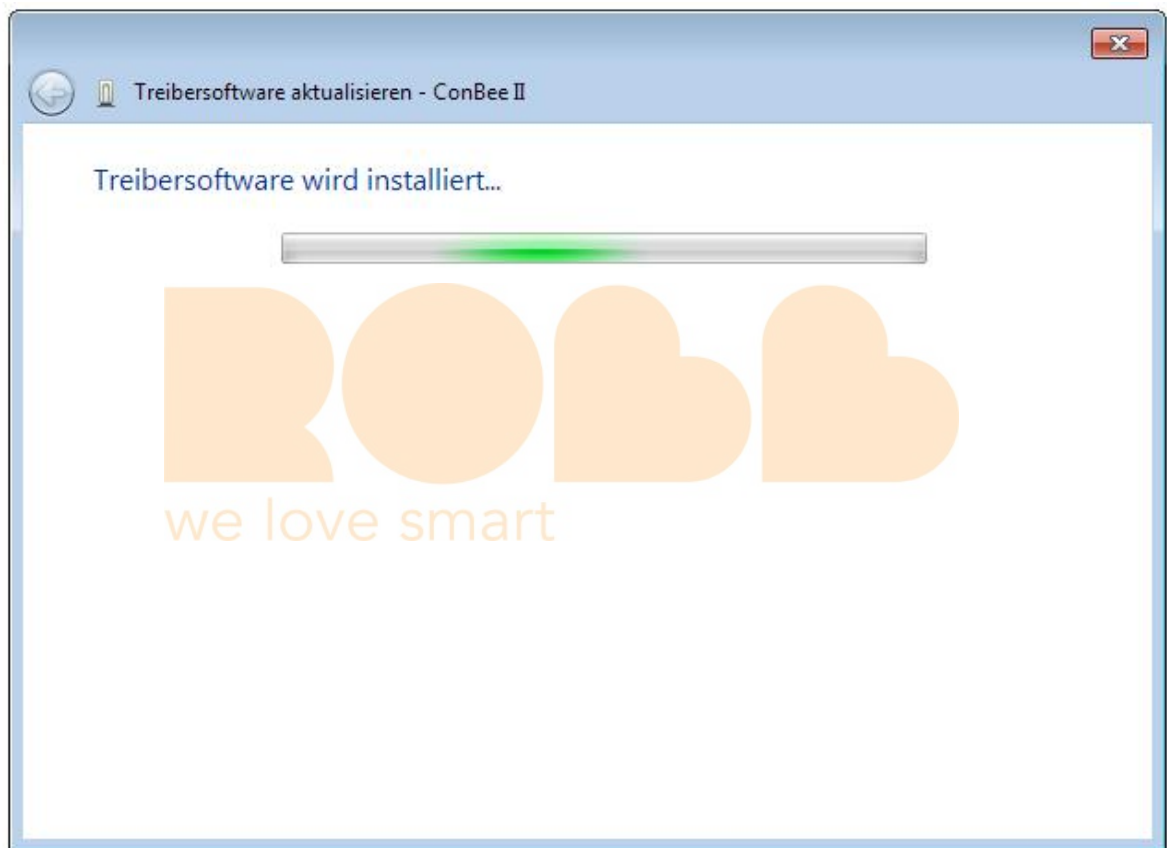
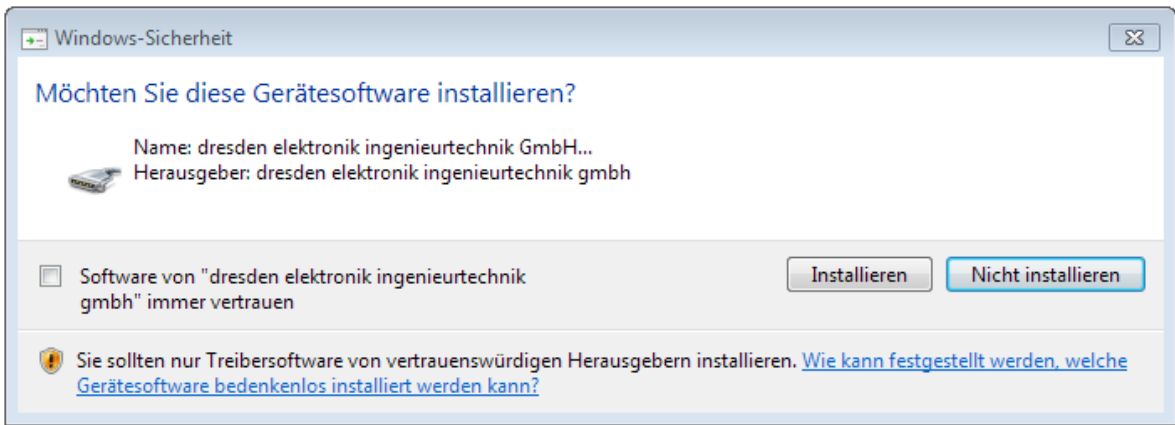
7. Select the option "Search for driver software on the computer".

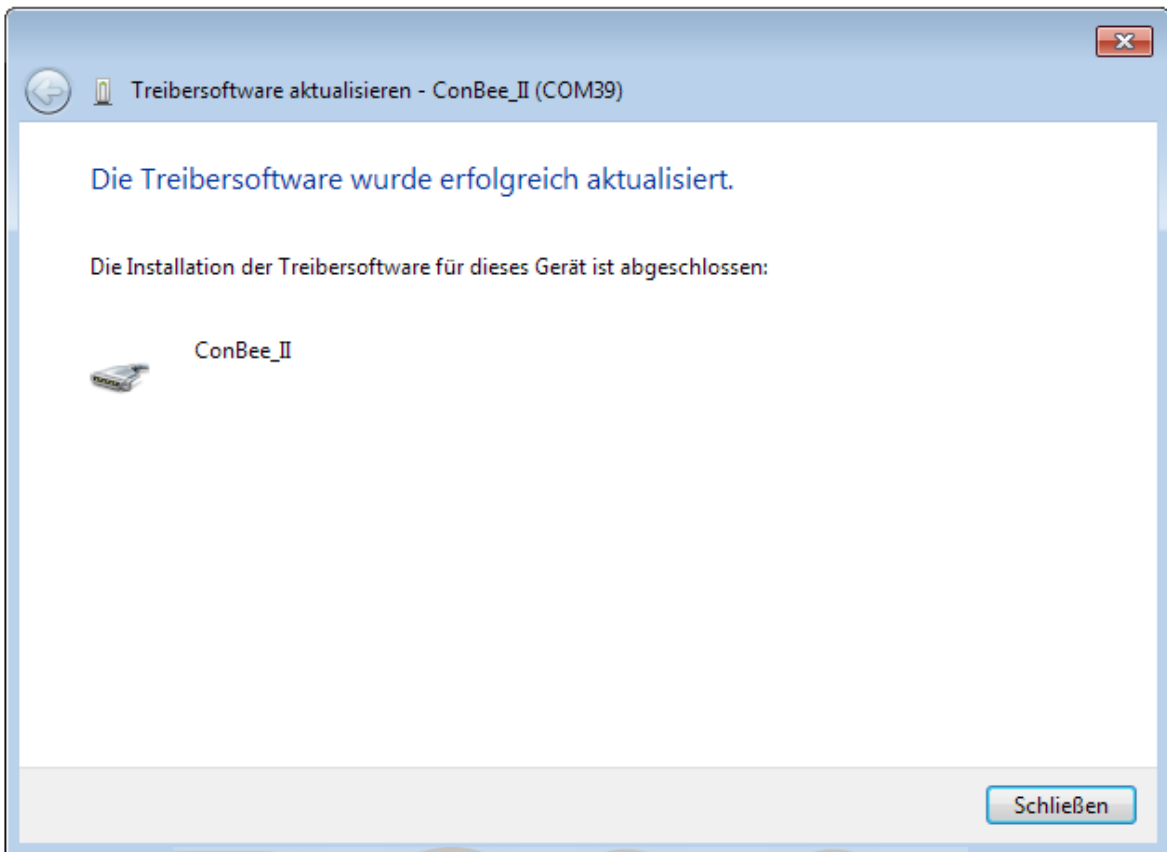




8. Select the directory with the extracted drivers and follow the instructions.

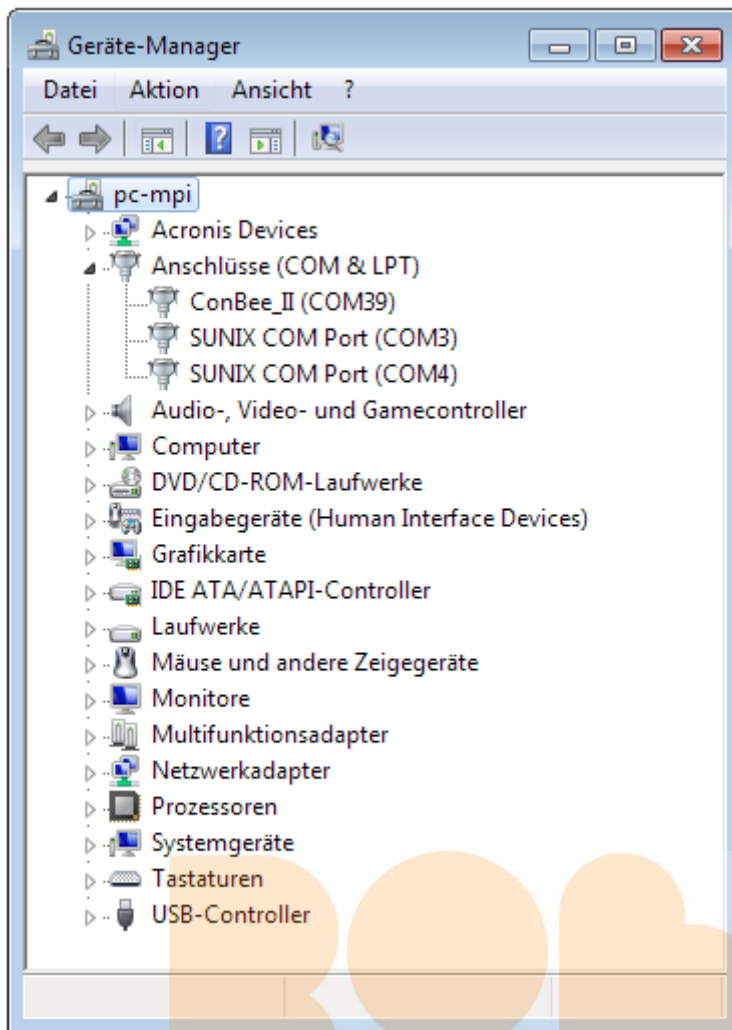
we love smart





ROBB

we love smart



we love smart