

maytronics | *Exceptional Experience*

Maytronics Dolphin M600

13.11.2019



Maytronics Dolphin M600

- What's new?
- Key Selling Points
- APP
- M600 Spec
- M Series - Products Comparison



Maytronics Dolphin M600

What's new?



New Robotic Platform

The best of S-Line - *PowerStream* mobility system

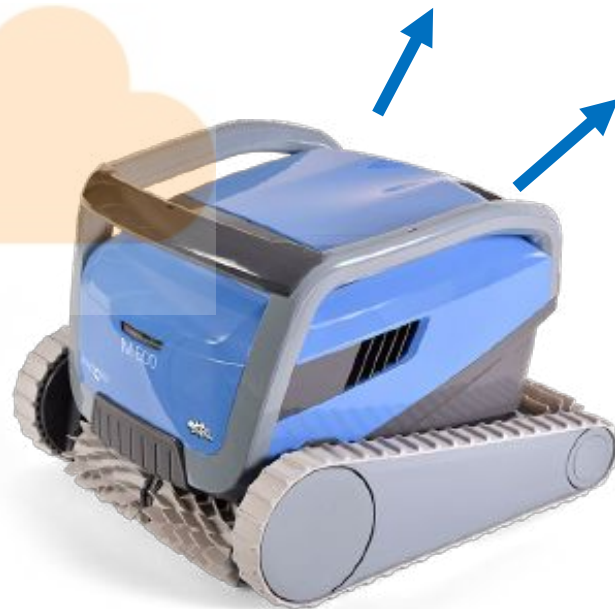
PowerStream mobility system, with multi-directional water outlet and precise navigation control.

The best of M-Line - *Dynamic Dual-drive* motor

Powerful performance dual-drive motor.

Additional capabilities

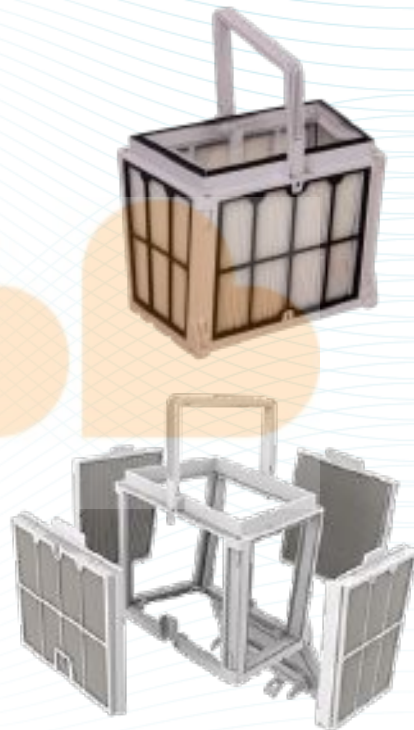
- Increased suction rate – 25% stronger than S 300i, 12% stronger than M500.
- the robot include 4 cartridges and 2 fine filter panels.
- The direction of the brush teeth.
- Brush with thermoplastic material that increases friction in water and enable the cleaner climb better.



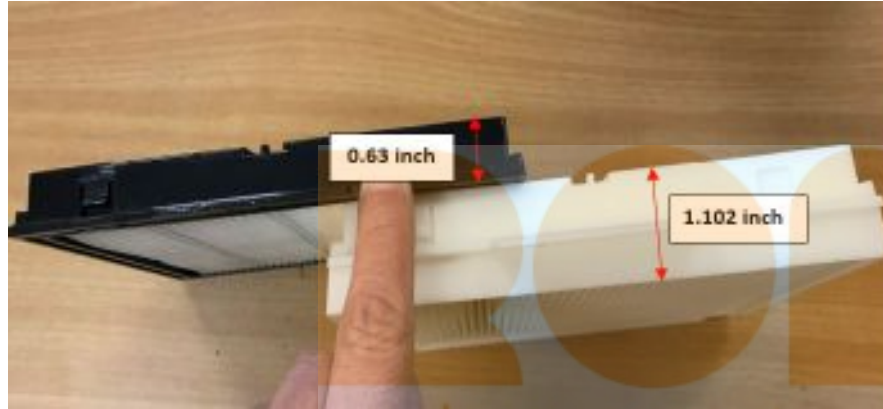
Super-efficient year-round filter

Extra Sealing of the filter (top + bottom), prevents the return of fine dust to the pool.
Resulting in better performance.

Optional thicker cartridge panels (x2), resulting in larger effective area.
While replacing the internal rough filter with a smaller one.



The thickness differences between the exist filter vs. new ones



we love smart



Superior pool cleaning made even easier

Maximum cleaning performance with minimum effort and hassle.

The Maytronics Dolphin M 600 is cloud-connected, enabling control from anywhere at anytime, with real-time connectivity via the MyDolphin™ Plus app.



Exceptional Experience

IoT – Internet of Things

Definitions :

“..The internet of things, or IoT, is a system of interrelated computing devices, mechanical and digital machines, objects, animals or people that are provided with unique identifiers (UIDs) and the ability to transfer data over a network without requiring human-to-human or human-to-computer interaction..”



New Power supply - IOT

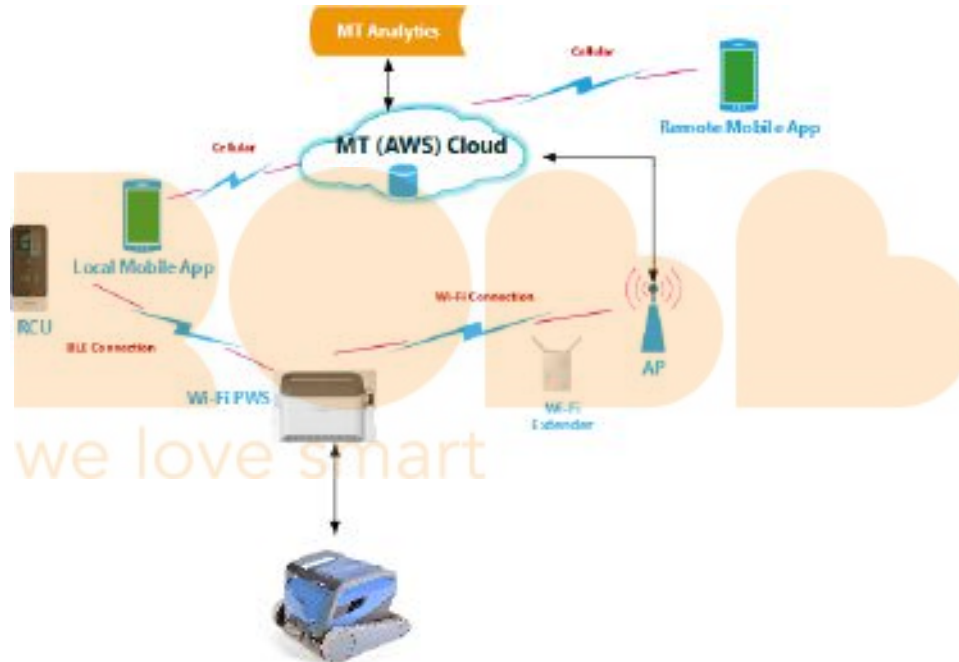
Bringing the power of the cloud to Maytronics robotic pool cleaners

New cloud-connected power supply, provides the robot with 24/7 connectivity, that enables advanced remote control and management, dynamic services, and proactive notifications to users.

we love smart



IoT - Always connected: the concept.



IoT PWS connectivity

Internet of Things = 24/7 connectivity.

Enables:

- Remotely: program/operate robot
- Cleaning tips to the user
- Serviceability:
 - Remote identification of product's issues, to better support the user
 - S/W upgrade remotely, PS + robot



Exceptional Experience



Current situation

Power Supply Types



2015 - 120W PWS

Advanced

- ON/OFF switch
- BLE
- Features:
 - Weekly
 - Cleaning Mode
 - Delay select

Basic

- ON / OFF switch
- No communication
- No features

2010 - 180W PWS

Basic

- ON / OFF switch
- No communication
- No features

Advanced

- ON / OFF switch
- RF + BLE
- Features:
 - Weekly
 - Cleaning Mode
 - Delay select



IoT PS Specification

General:

- 100 - 250V input auto switchable
- 180 watt

IoT:

- Two wireless connections:
 - Wi-Fi 2.4 GHz
 - BLE 4.1 standard
- Communication LED

Single button operation:

- ON / OFF
- Feature activation
- LEDs indication

Compatibility:

Models: - M600 / IO
- S300 / S300i
- M400 / M500



PS M600: Activations/Indications

Circular Led

<u>Mode</u>	<u>Circular LED Behavior</u>
Power Off (short press / less than 4 sec')	Off
Power ON (short press / less than 4 sec')	Blue – Blinks 4 times, then Blue ON constant
On	Blue – On constant
Delay - active	Blue – Blink <u>repeatedly nonstop till powers ON</u> :
Weekly Timer - everyday	Blue - blink <u>repeatedly nonstop till PS powers ON</u> : 1x ON, 1x OFF
Weekly Timer - every 2 nd day	Blue - blink <u>repeatedly nonstop till PS powers ON</u> : 2x ON, 1x OFF
Weekly Timer - every 3 rd day	Blue - blink <u>repeatedly nonstop till PS powers ON</u> : 3x ON, 1x OF
Robot / PS error	Red – <u>ON</u> (when PS is powered ON)
Manual drive	Green – On constant
S/W update	Blue & Green & Red – Blinks repeatedly

Communications Led

<u>Mode</u>	<u>Communications LED Behavior</u>
Bluetooth® connected	Blue – ON
Wi-Fi® connected	Green – ON



PS LED - legend



One key activation

- Only One feature, out of the following is enabled (“default”)
 - *The default will be based on decided spec of robot
 - Weekly Timer (Three options: Every day, Every 2nd day, Every 3rd day, Along 7 days)
 - Delay: 1hr , max’ 7 days
 - Floor only (permanent till changed)
 - Pick Up
- The end-user will be able to change “Default” function, using the APP
- Hidden feature (Timer Activation / Pool Automation mode), always included



New Power supply - IOT

Key benefits to **End-user** - Smart control and interactivity

- ✓ **Anywhere, anytime control**
Remote programing and operation of the robot, using the MyDolphin app.
Alerts and status notifications.
- ✓ **Greater convenience and service**
Remote software updates of the latest robot features and capabilities.
Proactive service and maintenance tips, enables Maytronics to send alerts and tips.
- ✓ **Simple interface**
Single button operation - Start/Stop with one click
Colored LEDs shows status at a glance.



New Power supply - IOT

Key benefits to **Dealers** - Service and differentiation

- ✓ **Adds differentiation**
By enabling a connected robot offering full remote control and operation
- ✓ **Facilitates service**
By allowing remote diagnostics, remote software upgrades (power supply and robot)
- ✓ **Enables interaction with third-party services,**
Such as weather-based operation (to come)

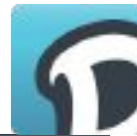


Smartphone App



we love smart

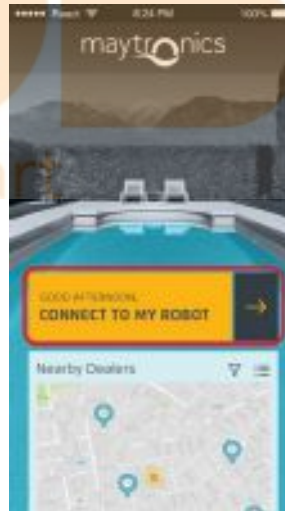
The new *MyDolphin* app



Control from anywhere –

Perfect pool from anywhere at any time, with easy mobile control.

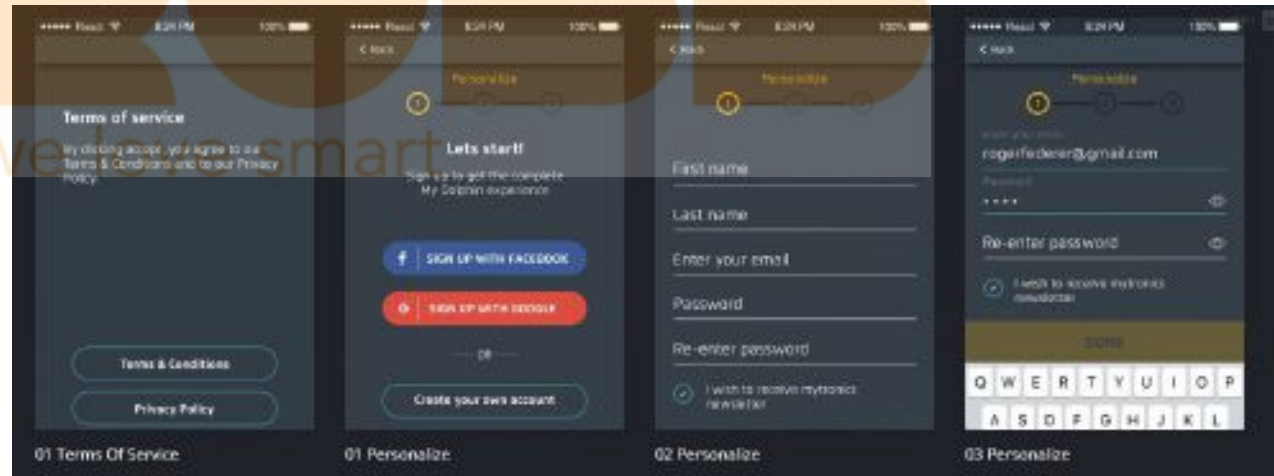
- Advanced design
- More programming options
- Easier programming
- Notifications
- Advices



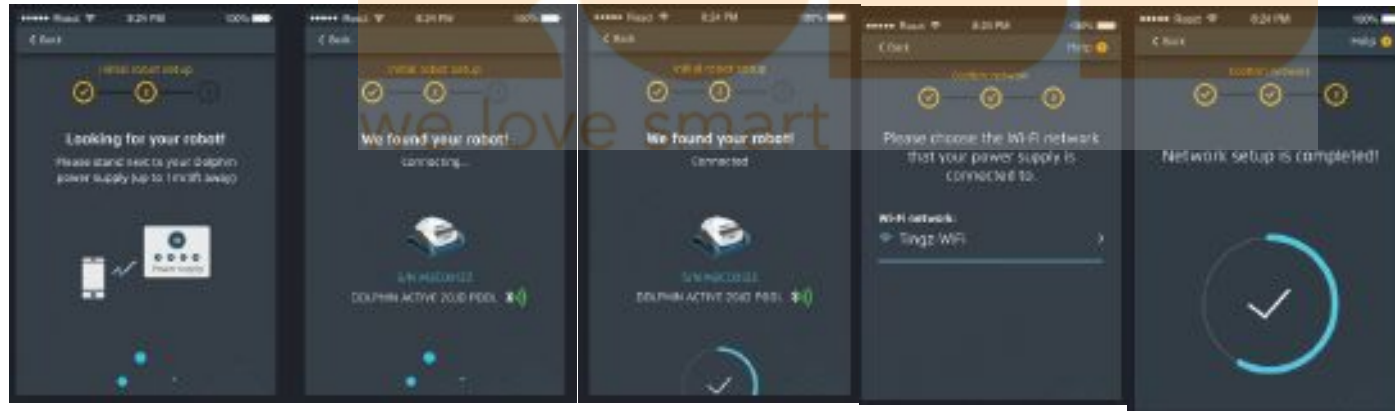
Exceptional Experience



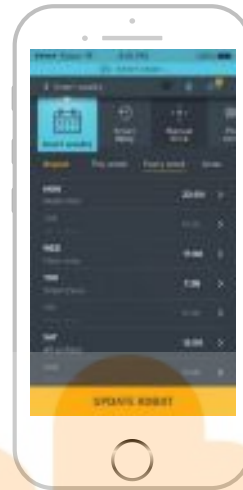
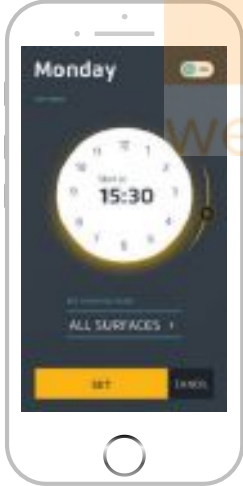
Customer Registration



Initial setup



ROGER DOLPHIN



Features

NEW

Remote Control (Optional)

- New design
- BLE connectivity
- IP67 – water resistance
- Convenient Intuitive Interface
- 2XAAA batteries

we love smart



Exceptional Experience

Maytronics Dolphin M600

The specifications



M600 features & Spec overview

General attributes	
Pool size (Up to)	50FT/15m
scanning coverage	floor, walls and waterline
Navigation aids	Gyro
Navigation pattern	Classic (Maze)
Drive Motor	Dual
Power Supply	180W IOT
Power Supply Activations/Indications	Single button operation - Start/Stop with one click
	Quick start



M600 features & Spec overview

Connectivity	BLE, Wi-Fi®, IoT Cloud Services
PSS	PowerStream system
Anti-Tangling	Swivel, SW Swivel
Brushing	Active brushing
Filtration	Super-efficient year-round filter
Max suction rate	19m ³ 5000 Gal/h
Weight	11kg 24.2 Lbs
Cable Length	18m 60ft
quick water release	Y
DIY repair	Y



M600 features & Spec overview

Visual effect	Led indicator (Fun)
	Led indicator (Error / Full Filter)
Warranty (years)	3
Caddy	Y
IoT App key features	Remotely: program / operate robot
	Cleaning tips
	Cleaning history
	Notification
	Manual drive
	Delay start



Maytronics Dolphin M600

Product Comparison



Dolphin M Series - Products Comparison



	M200	M400	M500	M600
Ideal Pool Length	Up to 10 m (33 ft)	Up to 15 m (50 ft)	Up to 15 m (50 ft)	Up to 15 m (50 ft)
Brushing	Dual active scrubber	Triple active scrubber	Triple active scrubber	Dual active scrubber
Navigation & Scanning	CleverClean™ scanning	CleverClean™ advanced scanning	CleverClean™ advanced scanning	Dual-drive PowerStream mobility system
Cleaning options	Floor, wall	Floor, walls & waterline	Floor, walls & waterline	Floor, walls & waterline
Cleaning Cycle time	2 hours	1.5 / 2.5 / 3.5 hours	1.5 / 2.5 / 3.5 hours	1.5 / 2 / 2.5 hours
Filtration	Fine/ultra-fine filters	Fine/ultra-fine filters	Fine/ultra-fine filters	Super-efficient Year-round filter
Smartphone MyDolphin App Control + Cloud- connected power supply	No	Manual drive, Scheduler	Manual drive Delay start Cycle time selector scheduler Notification	Manual drive Delay start Cycle time selector scheduler Notification
Caddy		Caddy included	Caddy included	Caddy included
Warranty	3 years	3 years	3 years	3 years



Exceptional Experience

Exceptional Experience



Thank You.