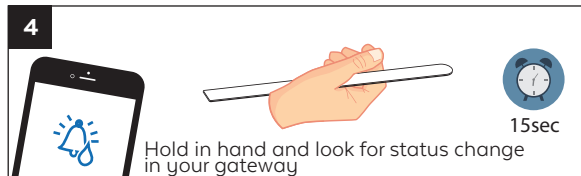
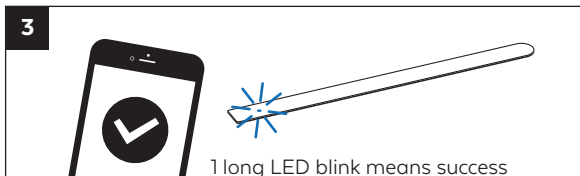
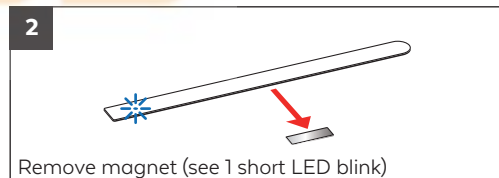
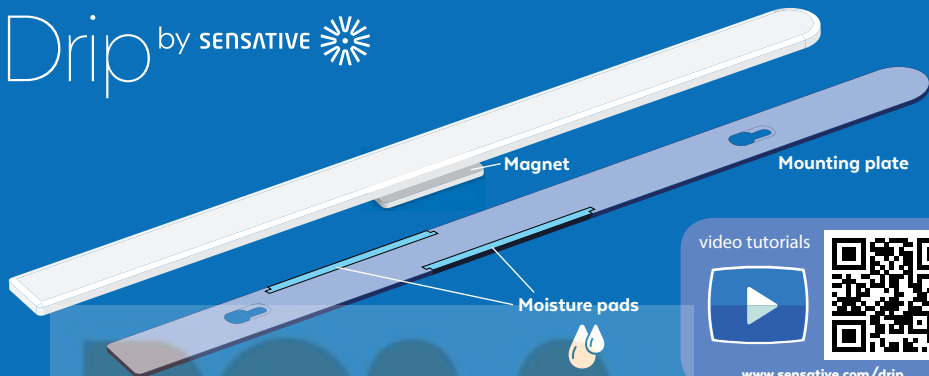
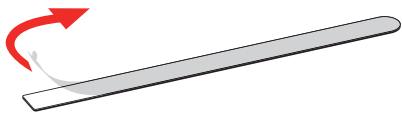


# Strips Drip by SENSATIVE

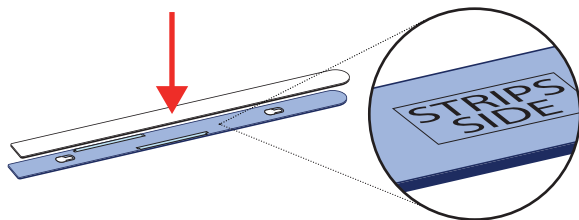


5



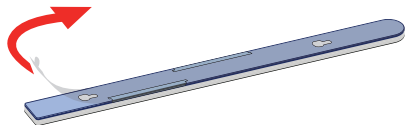
Remove the protective tape from Strips Drip adhesive

6



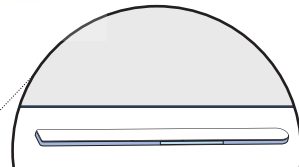
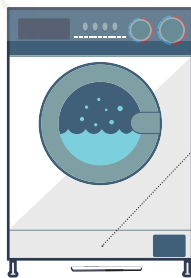
Mount Strips Drip on the marked "Strips side" of the mounting plate

7



Remove the protective tape from the mounting plate and place Strips Drip firmly on the surface

8



Place Strips Drip so that the moisture detection pads will soak any leaking water

# SENSATIVE STRIPS DRIP ILLUSTRATIONS MANUAL

Colors used:

PANTONE 285C - Blue, background first spread

PANTONE 2718C - Light Blue, Box background for QR code

CMYK - All other details

Black

Coating on all surfaces: Matte UV Coating

