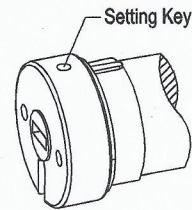


ES25/ES16/ types of DC tubular motor instruction

I Installing

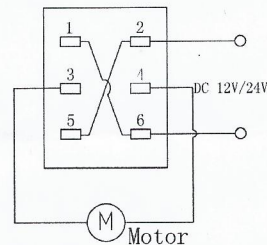
Note:-Install the motor wire ends on the same side as the power supply.

- The hole of "Setting key" on motor ends should face outwards (towards you)
- Tighten the brackets until the motor is horizontal.



II Wiring

- ★According to the chart, connect the terminal 1 with terminal 6; Terminal 2 with terminal 5
- ★Connect the motor with the switch
- ★Connect the switch with the power supply



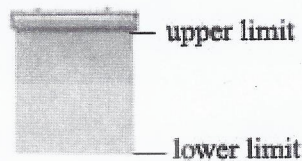
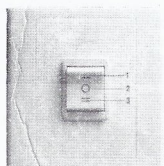
III Distinguish & change tubular motor "UP" & "DOWN" direction

When motor is in Stop state, press "UP" key on switch

- ★ If the tubular motor roll up, press "STOP" key and then tubular motor stops operate. The motor running direction is not need to be changed.
- ★ If the tubular motor is roll down, press "STOP" key and then the tubular motor stops operate. At that time, change the position of the wire 3 with wire 4 or the wire 2 with wire 6. Then, the motor operation is opposite to the original.

IV Motor programming

- UP
- STOP
- = DOWN



1、 Entering into the state of programming:

Keep the switch on the "UP" or "DOWN" position, and then, keep down the "Setting" key on motor head for more than 6 seconds. Motor gives out quick short alarm "Di, Di, Di" means the motor is entering into the state of programming.

2、 Setting of upper limit:

Keep the switch on "STOP" position, and then keep it on "UP" state, the motor continuously operate upwards. When the motor operation is near the end-point of the upper limit, keep the switch on "STOP" state, motor stops operation. Then press "UP" a time, and then press "STOP" a time, the motor will stop after operate around 2 angle. Repeat the above operation again and again until the motor operation reaches the end-point of the upper limit.

3、 Setting of lower limit:

Keep the switch on "DOWN" position, motor gives out quick short alarm "Di Di,Di". After 2 seconds, the motor continuously operate downwards. When the motor operation is near the end-point of the lower limit, keep switch on "STOP" state, motor stops operation. At that time, press "DOWN" a time, and then press "STOP" a time, the motor would operate around 2 angle and then stops. Repeat the above operation again and again until the motor operation reaches the end-point of the lower limit.

4、 Confirmation on motor limit setting:

Keep the switch on "UP" state, motor gives out quick short alarm "Di, Di ,Di" means the above limit setting is effective.

5、 Tentatively test whether the limit setting is normal by using the switch. If you would like to re-set the limit, please repeat all the limit operation from the 1st step.

V Diagnostics

If nothing works, check

-When the power supply is fitted correctly and well tightened, the motor will send out sound "Di,Di,Di".

If the system does not stop, check

-If the motor running toward one direction continuously, the motor limit has not been setted successfully. Please re-set the entire limit.