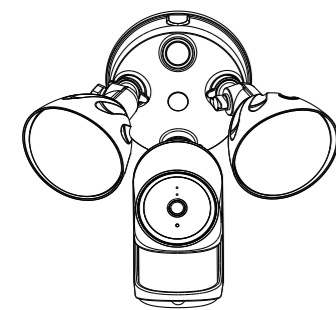


Quick Setup Guide

Floodlight Camera

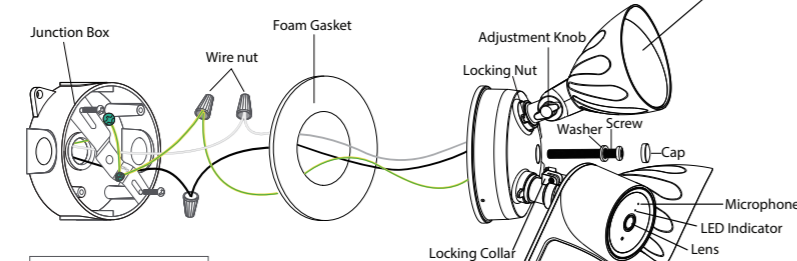


Support email: support@foscam.com

V1.2
305503000662

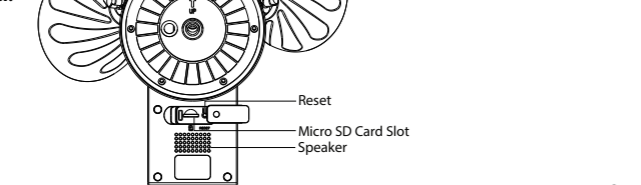
Installation Example Diagram

Front Panel:



Floodlight wiring
Black (Active)
White (Neutral)
Green/Yellow (Earth)

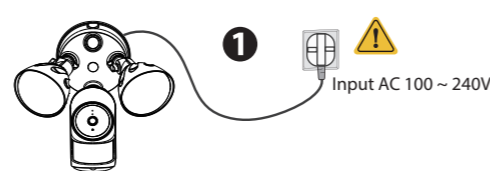
Rear Panel:



- 2 -

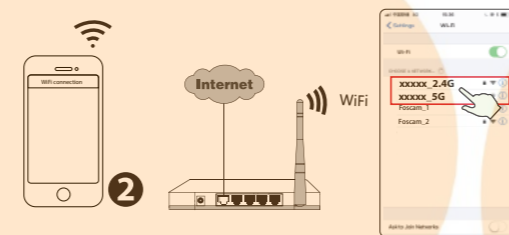
WiFi connection

1. Plug in the power and wait for a few seconds until hearing the "Ready for WiFi configuration".

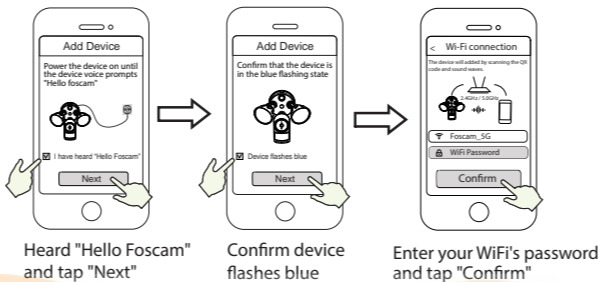


Tips: If you didn't hear the voice prompt, open the port cover on the back of the camera. Press and hold the Reset button for about 10 seconds to reset the camera.

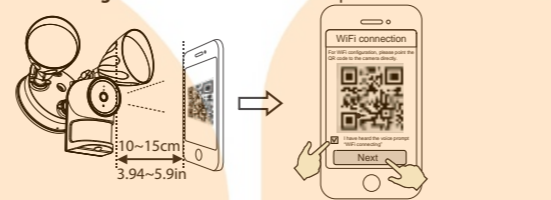
2. Make sure that your smart phone is connected to your WiFi router.



- 4 -



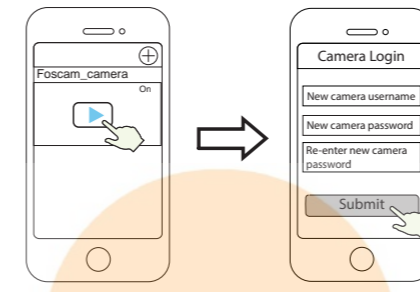
6. Please scan the QR code on the phone screen with the camera, then you will hear a voice prompt say "WiFi connecting". Select the checkbox and tap "Next".



Tips: Please place the QR code on the phone screen about 10 to 15cm (3.94 to 5.9in) away, and if you encounter difficulties you can try to move the screen slowly around 10 - 15cm (3.94 - 5.9in).

- 6 -

8. Tapping on the play button in the video box will jump to the "Camera Login" setting interface. For your security, please set a new username and password for your camera before viewing live video.



9. After completing the above steps, you can begin installing your camera.

- 8 -

2. Access the area you want to be lit and the area you need camera coverage, and install your Floodlight Camera on the front wall or on the side wall. The side wall is highly recommended to get an optimal coverage for the floodlight and camera.

*The motion sensor is more sensitive to the movements across the camera field of view than movements towards or away from the sensor. We highly recommend you install the floodlight camera on the side wall.

For the best product experience, we suggested installation height of floodlight camera: 2.5m (8.2 feet), camera downward tilt angle 15°.

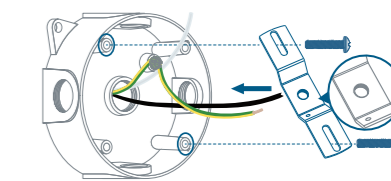


- 10 -

Installing the Junction Box

1. Remove the old Floodlight from the junction box and install the mounting plate to the junction box.

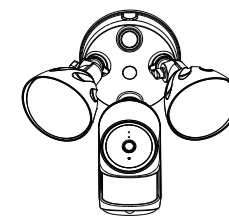
Tip: The junction box and existing electrical wires are required to Floodlight Camera installation. If you do not have an existing wiring junction box at home, you will need to purchase this junction box separately, which is not included in our package.



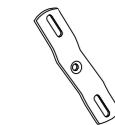
Note: The concaved side of the mounting plate must face outwards.

- 12 -

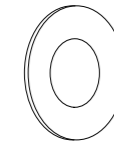
What's in the Box



1 x Floodlight



1 x Mounting brackets



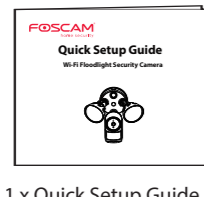
1 x Foam Gasket



1 x Expansion Screws



1 x Installation Hook



1 x Quick Setup Guide

- 1 -

Add Device: Connection via the Foscam App (Recommended)

It is strongly recommended that you complete the "add devices" process on the Foscam app before the Floodlight hardware is installed.

Before You Get Started

Scan the QR code below to download and install the Foscam APP, and learn how to add the Floodlight camera to the APP.



Download the Foscam APP



APP add Floodlight instruction video

To ensure a smoother video experience on your smart phone, it is recommended that your smart phone meet the following specifications:

- iOS: version 11 or higher.
- Android: 4.1 or higher, using a device with a Graphics Processing Unit (GPU).

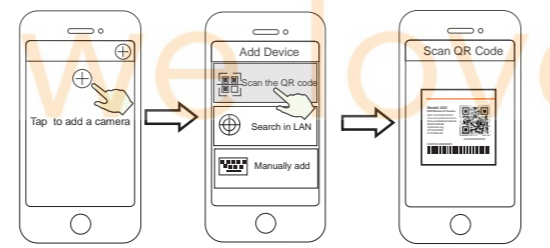
Note: For the best experience, please update the APP to the latest version!

- 3 -

Tips: The camera supports dual-band 2.4GHz and 5GHz WiFi networks, so you can choose the channel with the stronger signal to use. For example, choose your SSID: XXXXX_2.4G or XXXXX_5G.

3. Open the foscam APP and please sign up for a Foscam account, or sign in if you have one already.

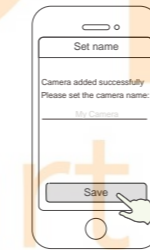
4. After logging into Foscam APP, select "Tap to add a camera" or "+" icon on the upper right corner, then select "Scan the QR code" and scan the QR code that labeled at the bottom of your camera.



5. In "Add Device", if you hear "Hello Foscam", select the checkbox and tap "Next", continue to confirm that the device is in the blue flashing state and tap "Next". In "WiFi connection", enter your WiFi's password and tap "Confirm", (see illustrations on next page).

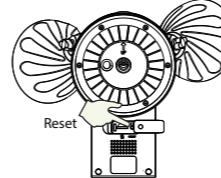
- 5 -

7. Wait a few seconds until the camera notifies you that the "Wireless connection succeeded", which means your camera has connected to your WiFi successfully. After, you can set the camera name and tap "Save" in "Set name" interface.



Camera added successfully and the name has been set

Note: If the process of adding a camera fails, please reset your camera and try adding again according to the above method. Open the port cover on the back of the camera. Press and hold the Reset button for 10 seconds.



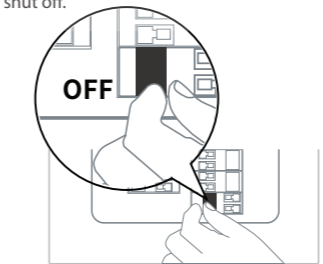
- 7 -

Floodlight Installation Getting Started

Note: Make sure you have installed the Foscam App, and have scanned the camera QR code and completed the "add device" process in the app before beginning the hardware installation process.

This unit is designed to be mounted on a standard wiring junction box and requires connection to a 100 ~ 240VAC power supply. If you do not have an existing wiring junction box at home, you will need to purchase this junction box separately, which is not included in our package. For optimum results, it is suggested that the installation height of the product should be 8.2ft (2.5m) and the camera should be tilted 15° downward.

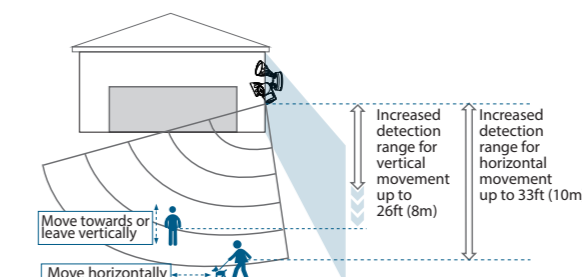
1. Shut power off at the breaker in your house. Switch on/off the lights to make sure the electricity in your house is properly shut off.



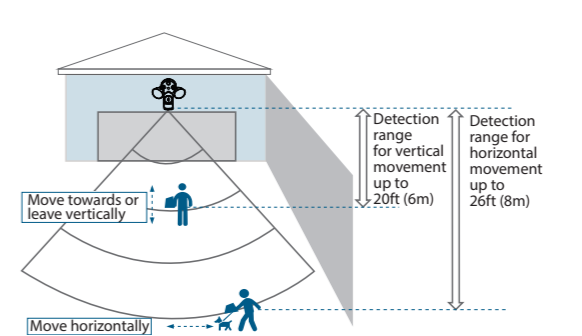
Note: Risk of shock, disconnect power before servicing. Contains no user serviceable parts. This product must be installed by a licensed electrician in some countries. Check local regulations.

- 9 -

On the side wall:



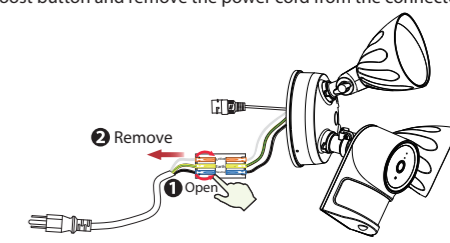
On the front wall:



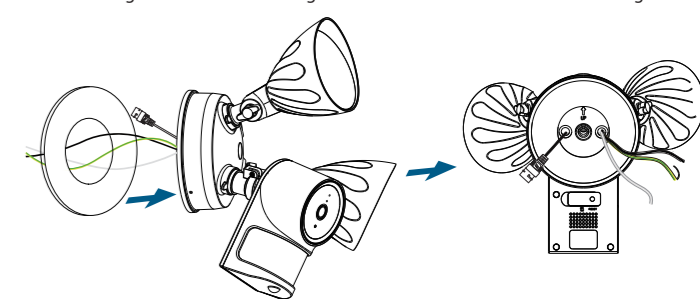
- 11 -

Mounting Floodlight Camera

1. Turn on the boost button and remove the power cord from the connector.



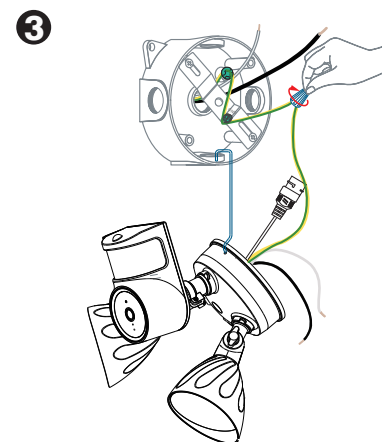
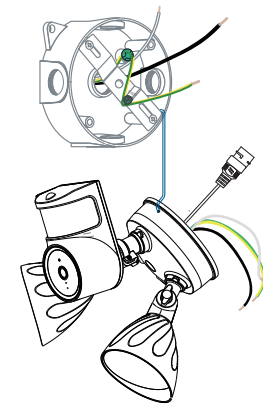
2. Peel the backing of the adhesive foam gasket and stick it to the back of the floodlight unit.



- 13 -

Hang Floodlight Camera

1. Hang Floodlight Camera on the junction box with the hook provided.

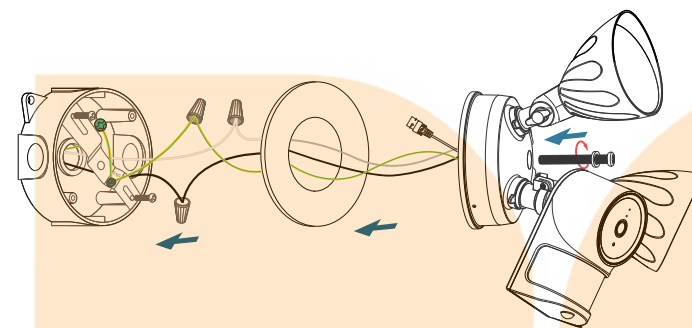


Note: Risk of shock, disconnect power before servicing.

- 16 -

Mount Floodlight Camera On the Junction Box

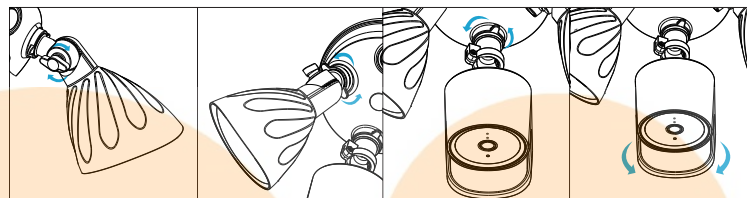
1. Align the hole on the junction box with the opening in the Floodlight Camera.
2. Screw the central screw through the center of Floodlight Camera to mount it in position.



- 18 -

Adjusting Floodlight Camera

1. After installation is complete, loosen the adjustment screws on the camera and floodlight to adjust the camera and light position to the desired angles.
2. Tighten the screws firmly to complete the installation.

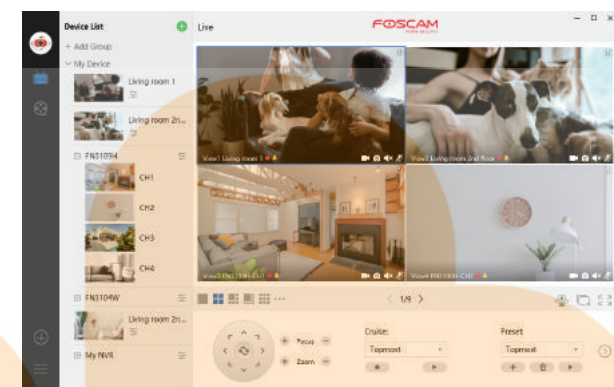


- 20 -

Add the IP Camera

1. Run Foscam VMS, then create a local administrator account and login.
2. Tap the "+" icon on the Foscam VMS and follow the setup wizard to add your camera.

Please visit foscam.com/downloads to view the user manual and for additional detailed steps.



- 22 -

Storage Media

Your camera supports cloud, NVR (Network Video Recorder), and Micro SD card (supports FAT-32 and ex-FAT format) storage formats. If you wish to record and play back large amounts of video, we recommend using a Foscam NVR device as well.

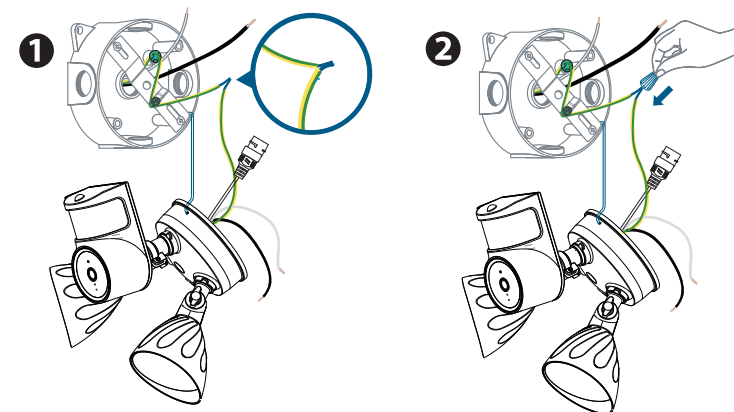
Firmware Upgrades

You can upgrade the firmware of your camera with the Foscam App by using the new "One-Key-Online Upgrade" feature (Open the Foscam App and Login to the camera, select "Settings" > "Firmware Upgrade").

You also can download the latest version to upgrade your camera from our official website foscam.com/upgrades.

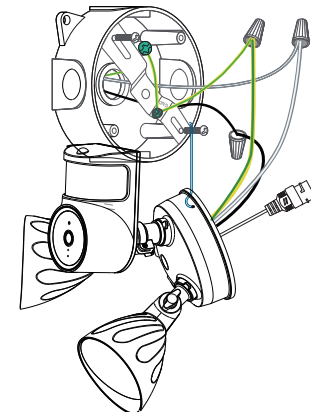
- 24 -

2. Connect both ground wires (yellow or green) from the junction box and Floodlight Camera, join the wires by using a wire nut. If the existing ground wire has been connected to the junction box or there's no ground wire, connect the ground wire of the Floodlight Camera to the junction box or mounting plate directly.



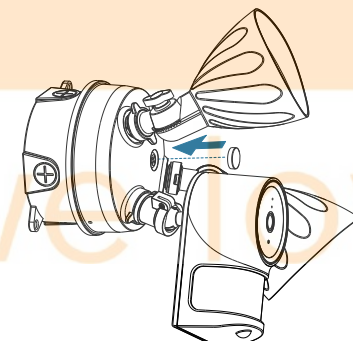
- 15 -

3. Use wire nuts to connect Floodlight Camera wires to the rest of the wires from junction box. Connect the white wire on the Floodlight Camera to the white wire (neutral) from junction box. Connect the black wire on the Floodlight Camera to the black wire (hot) from junction box.



- 17 -

3. Cover the central screw with the central screw cap to prevent it from rusting.



- 19 -

Other Ways to Access Your Camera

Foscam VMS

Foscam VMS is a new tool for PCs. It does not require plug-ins and is compatible with Windows & Mac, supporting all Foscam HD cameras and up to 36 cameras at the same time. If you would like to manage multiple cameras, we suggest you install Foscam VMS. You can download the "Foscam VMS" Windows version from foscam.com/vms, and can download the "Foscam VMS" Mac version from the APP store: <https://apps.apple.com/cn/app/foscamvms/id1521202507?mt=12>.

Note: For the best experience, please update Foscam VMS to the latest version!

- 21 -

Important Notice

Camera Username & Password

The camera username & password are used to access and manage your camera. Having a strong password can significantly improve the security of your camera.

If you have forgotten either of them, please press the "Reset" button and hold it for more than 10 seconds while the camera is powered on. After hearing the voice prompt, release the button. The camera will automatically reboot and the default settings will be restored. You can then reconnect the camera by following this Quick Setup Guide.

Foscam Cloud Service Account Username & Password

Your Foscam Cloud service account and password may be used to access both the Foscam App and the Foscam Cloud service website. Therefore, you can register your account username & password on either one.

- 23 -

Safety Tips

- Please ensure that the proper power supply is used before using the camera.
- Please install the camera and bracket securely using the screws provided.
- Please use this product within the temperature range -4°F~122°F (-20°C~50°C). When the ambient temperature is too high or too low, it may cause product failure.
- To avoid the risk of fire or electric shock, please keep your camera connectors in a cool, dry place.
- Please keep the camera out of reach of small children.
- This product is not a toy; children should use the product under adult supervision.
- Change your default port to a greater range to help ensure the safety of your connection. How to change the default port: please visit foscam.com/downloads to view the user manual.
- Check the logs of your Foscam camera frequently. Foscam camera have embedded logs telling you which IP addresses are accessing the camera.
- The floodlight source of this luminaire is not replaceable; when the floodlight source reaches its end of life the whole luminaire shall be replaced.



WARNING: This product must be installed by a licensed electrician in some countries. Check local regulations. Risk of shock, disconnect power before servicing. Contains no user serviceable parts.

- 25 -

Product Performance

WLAN frequency range: 2412MHz - 2472MHz and 5725MHz - 5850MHz
Maximum transmission power: < 14dBm
Wireless Standard: IEEE802.11b/g/n (2.4GHz)
IEEE802.11a/n/ac (5GHz)
Power Supply: AC 100 - 240V ~ 50/60 Hz

Technical Support

If you have problems with your Foscam device, please contact the reseller you purchased from, or you can e-mail the company headquarters technical support team: support@foscam.com

Your valuable comments and suggestions on improving Foscam products are welcomed!



FAQ



Foscam APP



Installation video on YouTube

- 26 -

FOSCAM
home security



CE Certificate statement Website:
<https://www.foscam.com/company/ce-certificate.html>

Exporter and Importer Information Opened to Public:
<https://www.foscam.com/company/open-information.html>

Foscam, Inc.

www.foscam.com

Support email: support@foscam.com

Due to product upgrades and other reasons, this guide may be slow to update, resulting in slight inconsistencies with the official website information. Please take the official website (www.foscam.com) information as the current standard.

- 27 -